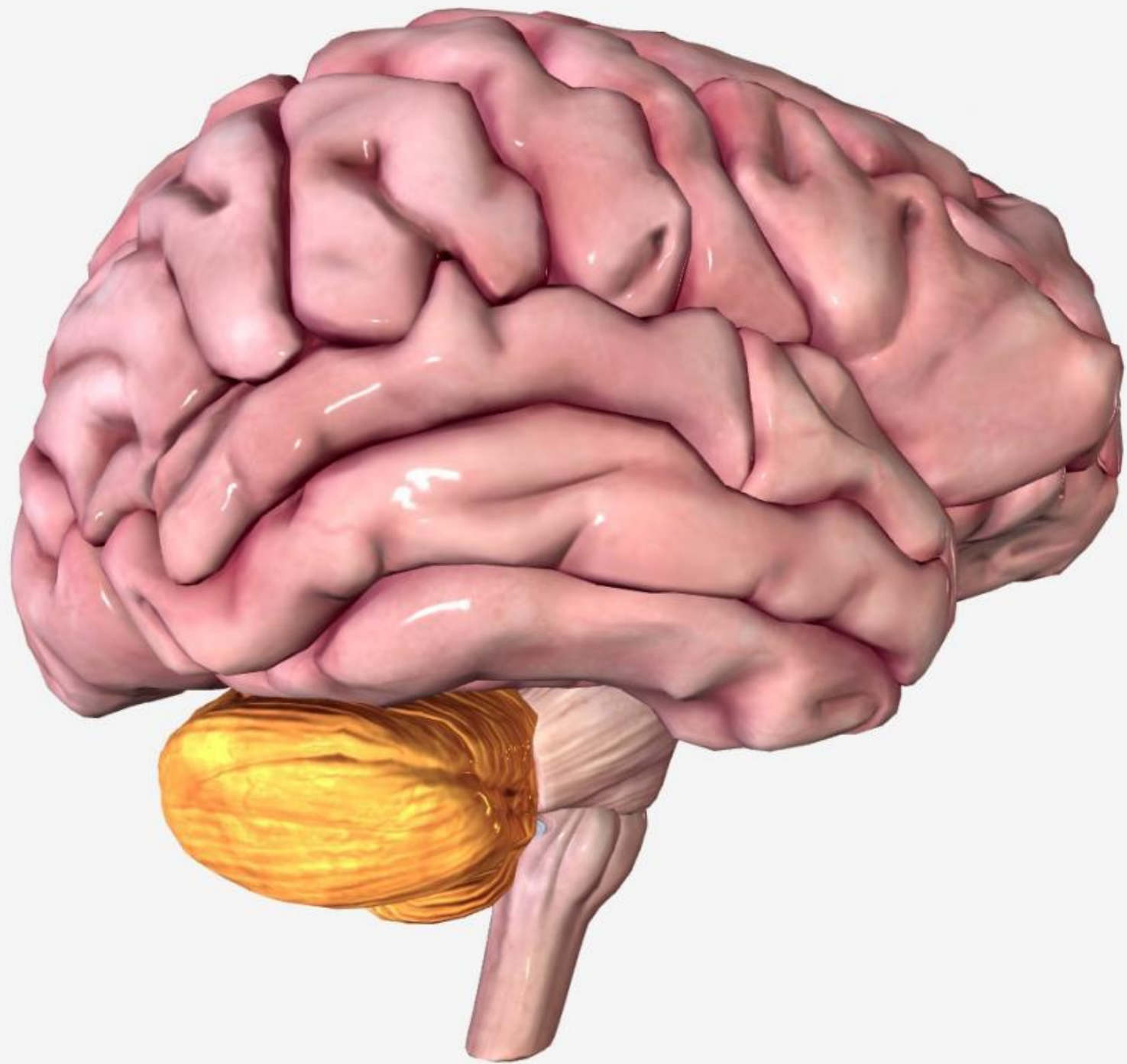
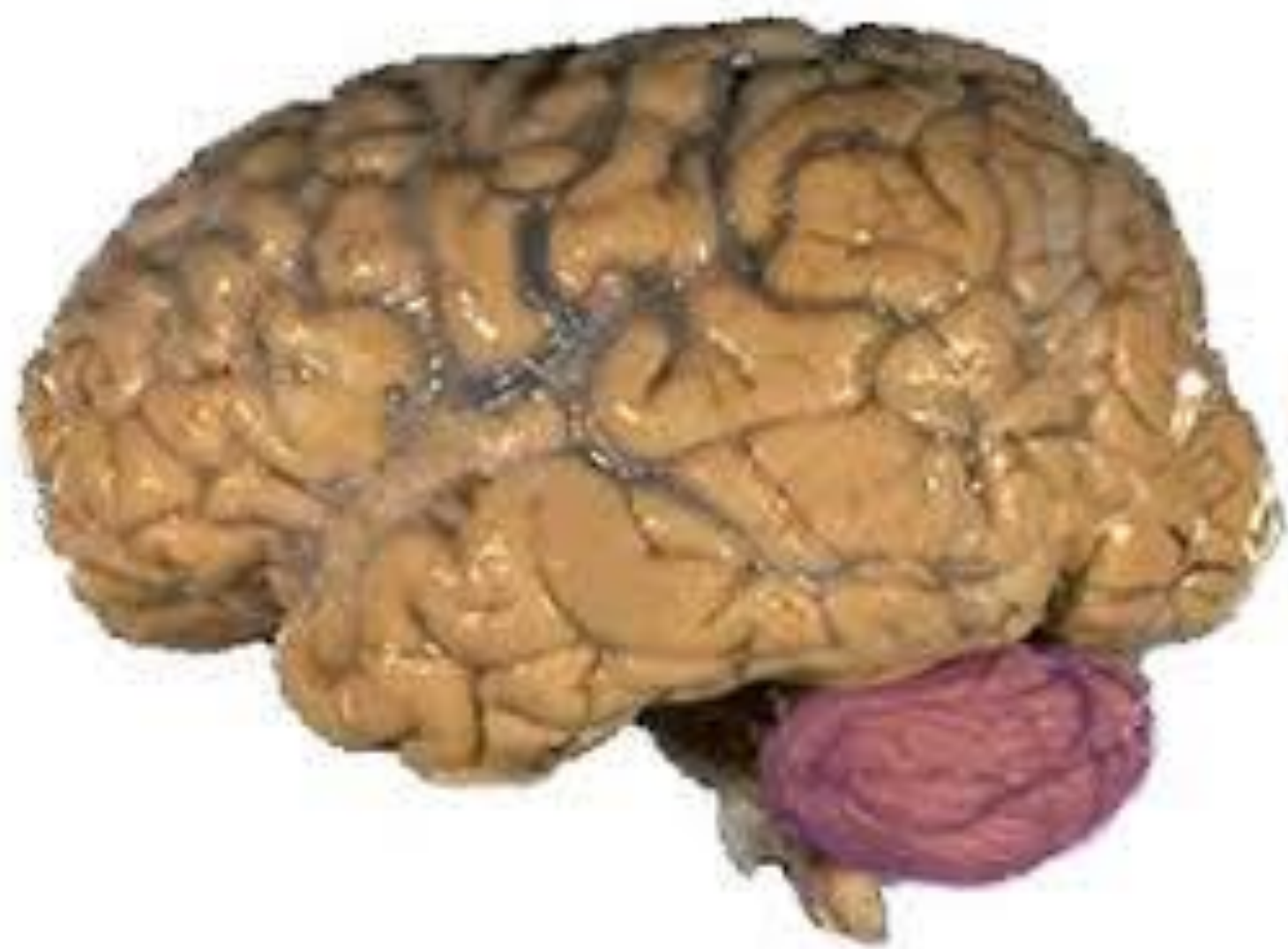


Cerebellum



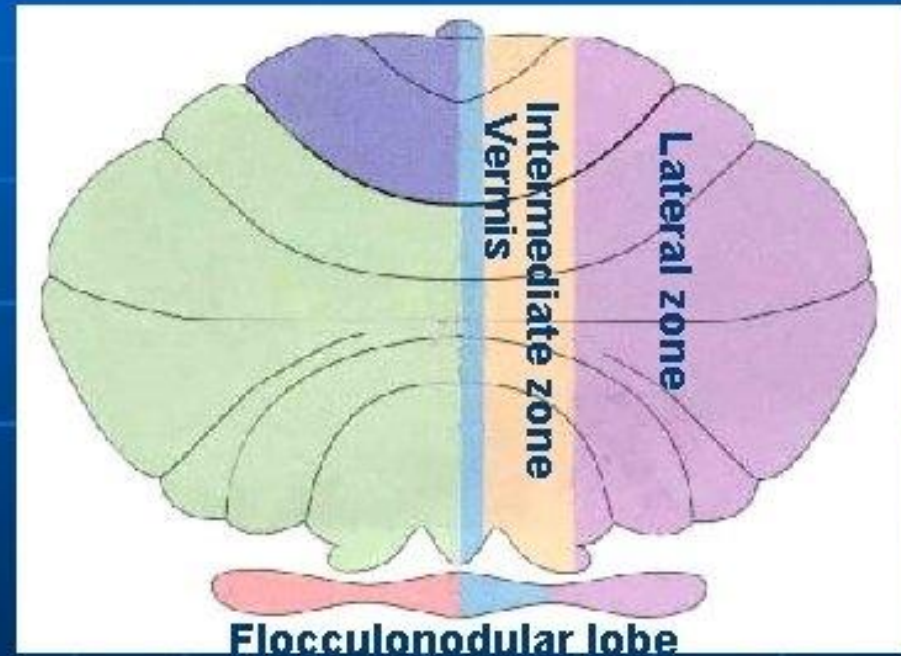


Functions

- Helps in maintaining equilibrium
- Muscle tone and posture
- Skilful learned movements

Functional divisions

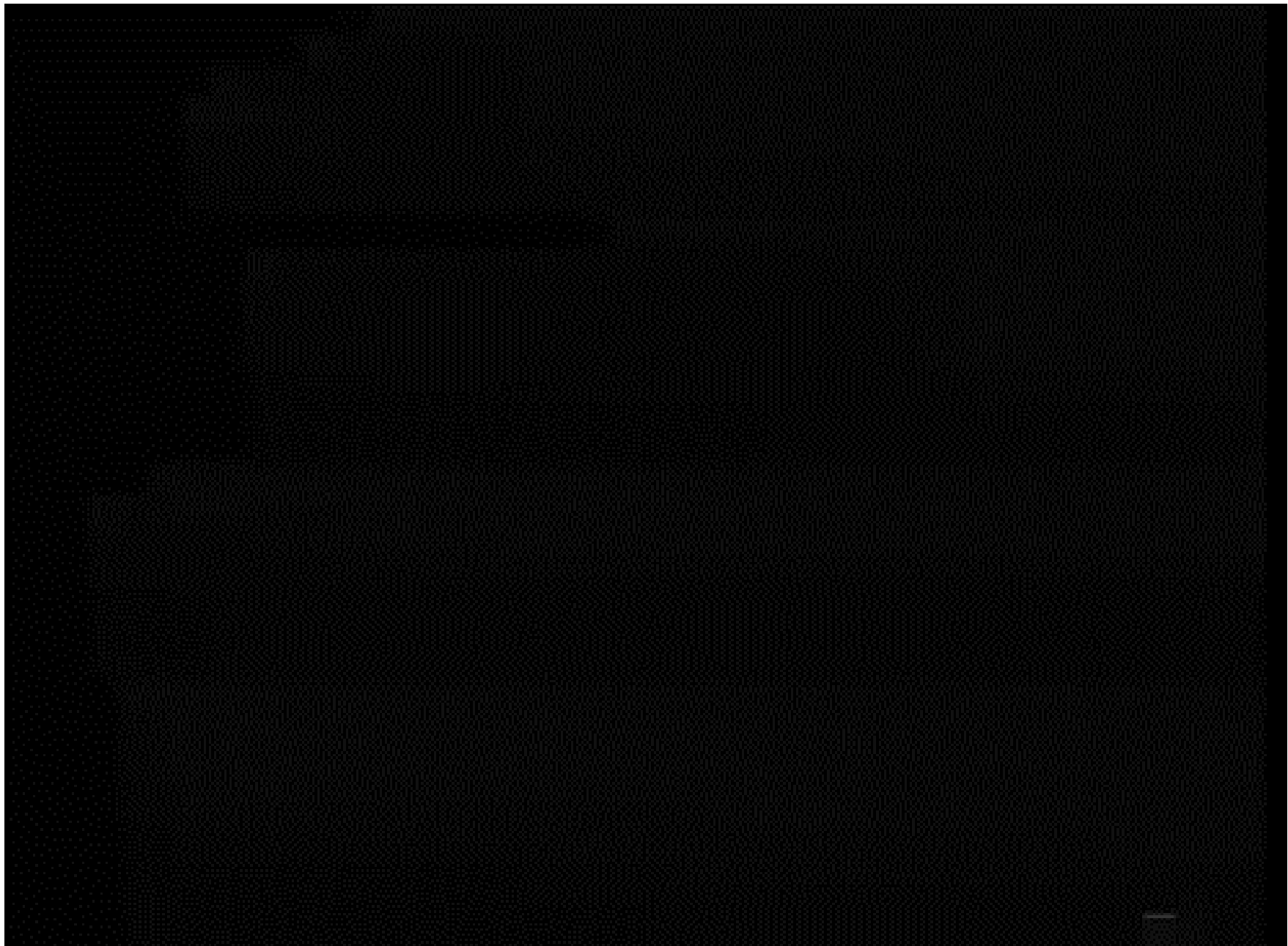
- **Vestibulocerebellum**
 - Archicerebellum
 - Flocculonodular lobe
- **Spinocerebellum**
 - Paleocerebellum
 - Vermis and intermediate zone
- **Cerebrocerebellum**
 - Neocerebellum
 - Lateral zone



Cerebellar lesions-affects

Archi cerebellar syndrome (as in medulloblastoma)

- Disturbance in equilibrium
- Wide base gait
- Body sways from side to side



- **Paleo cerebellar syndrome**- This generally occurs in excessive intake of alcohol and malnutrition
- Ataxia of gait: An unsteady, staggering **gait** is described as an **ataxic gait**
- Truncal ataxia: It is an instability of the trunk and often seen during sitting

- Truncal ataxia (or trunk ataxia) is a **wide-based "drunken sailor" gait** characterised by uncertain starts and stops, lateral deviations and unequal steps.
- It is an instability of the trunk
- and often seen during sitting.
- It is most visible when shifting position or walking heel-to-toe.



Neocerebellar syndrome-

- Hypotonia (with pendular knee jerk)
- Asynergia or loss of muscle incoordination leading to **dysmetria** or past pointing, **Dysdiadochokinesis** or inability to demonstrate rapidly alternating movements, **rebound phenomenon**, **dysarthria** or scanning speech, **nystagmus**, **intention tremor**