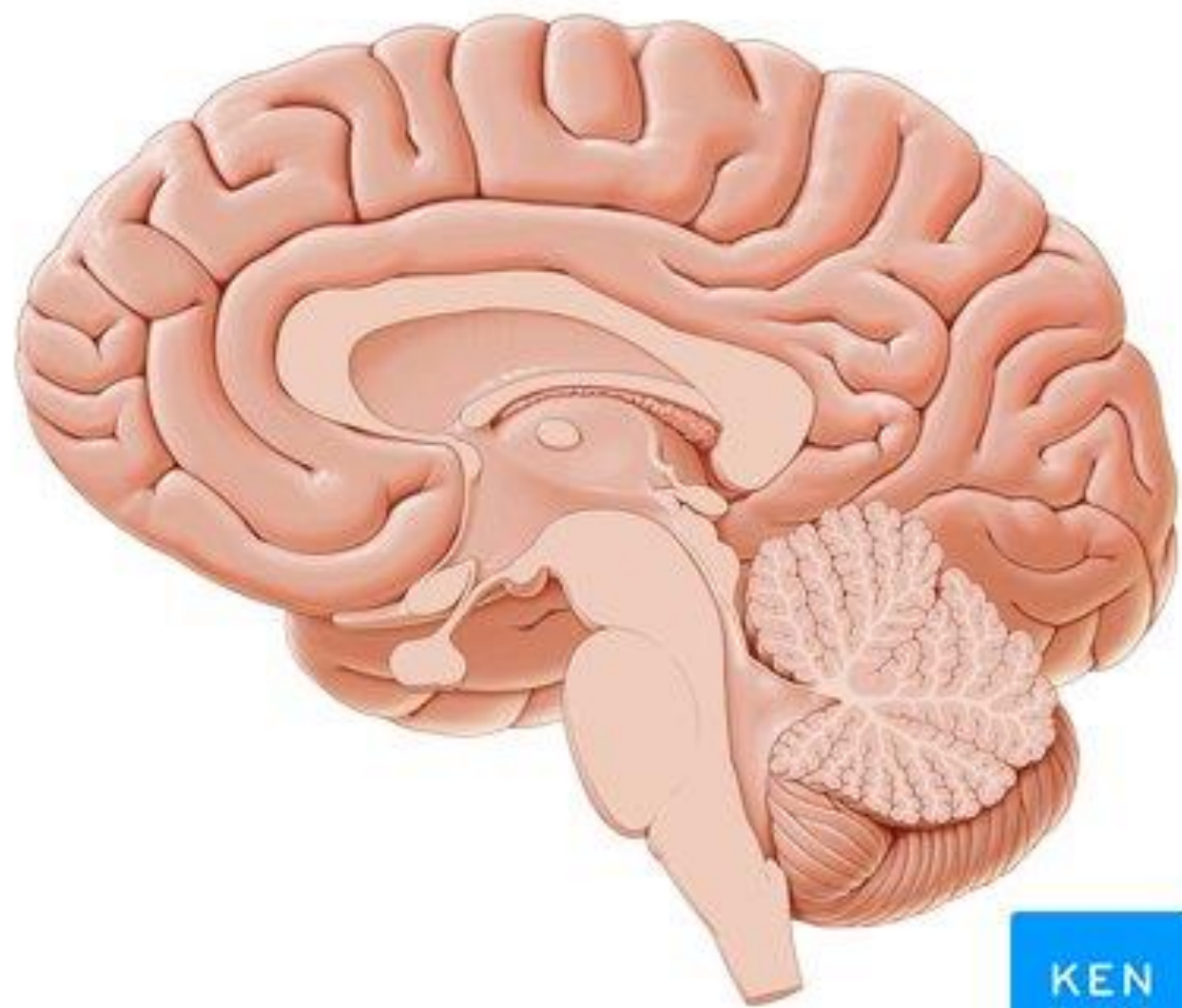


Brain stem

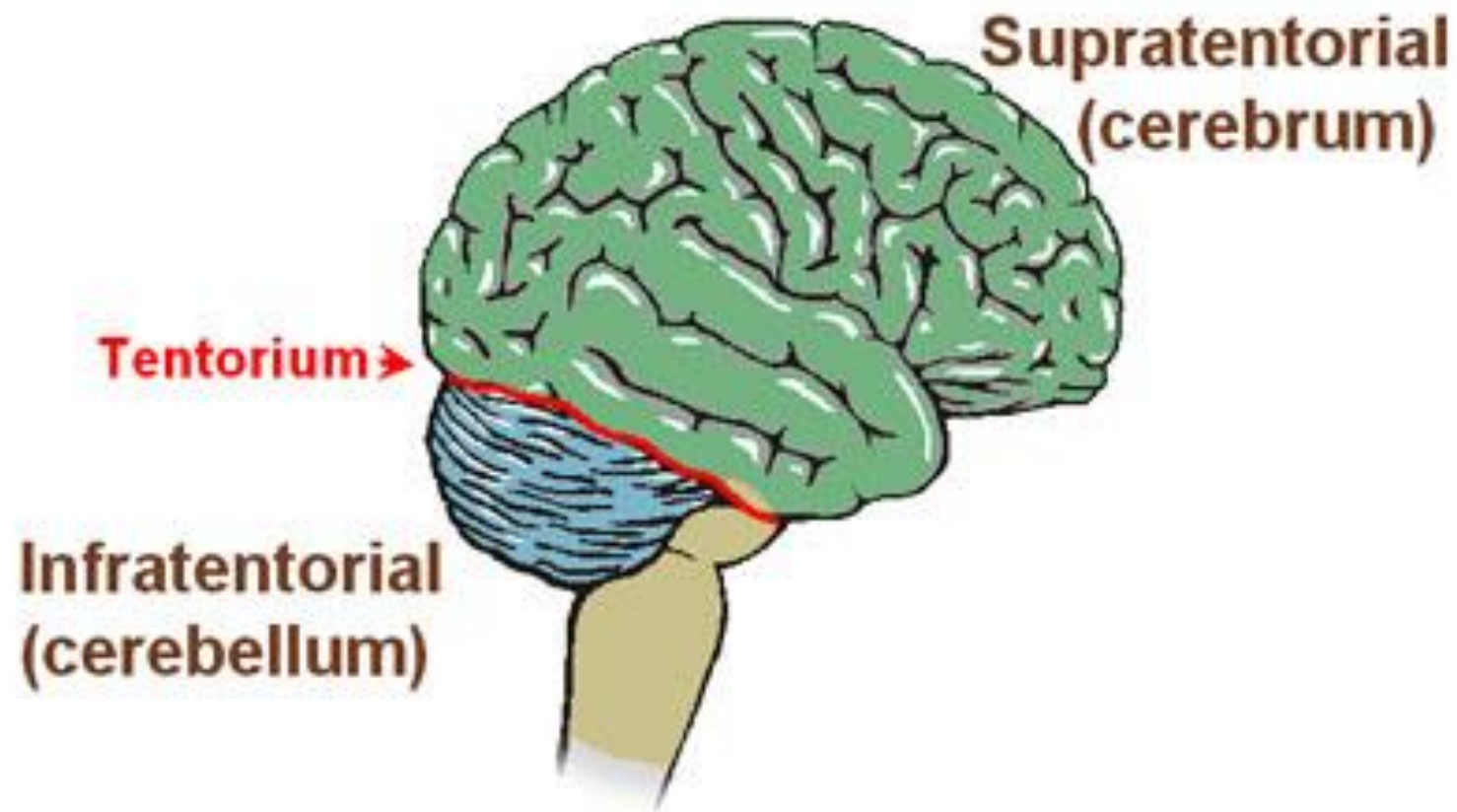
- Brain stem connects the spinal cord below to the diencephalon above
- It consists of the medulla oblongata, pons and medulla
- It contains ascending and descending tracts/ nuclei of cranial nerves/reticular nuclei
- It is mostly infra tentorial
- It is connected to the cerebellum by peduncles and separated from the cerebellum by the 4th ventricle

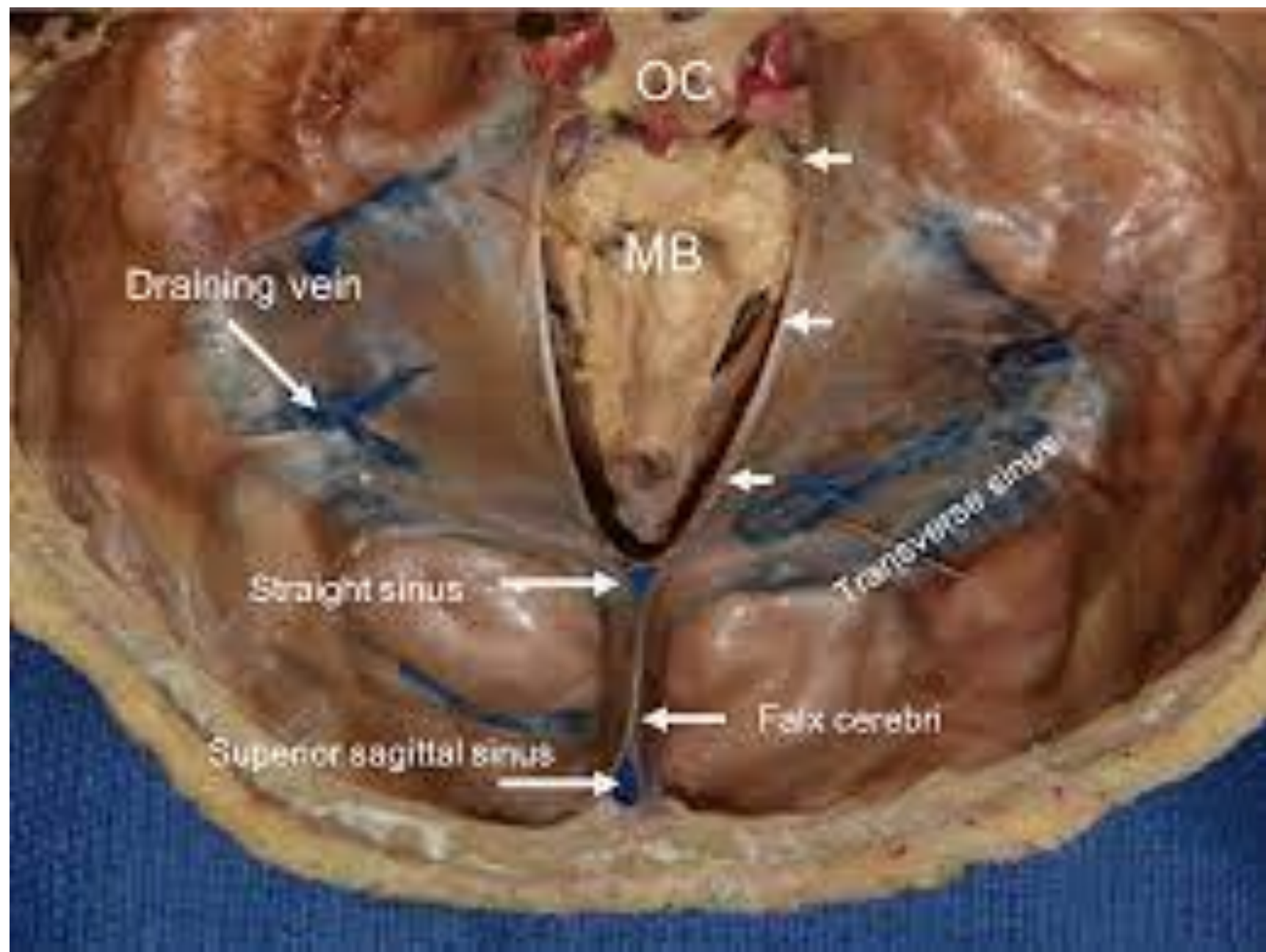


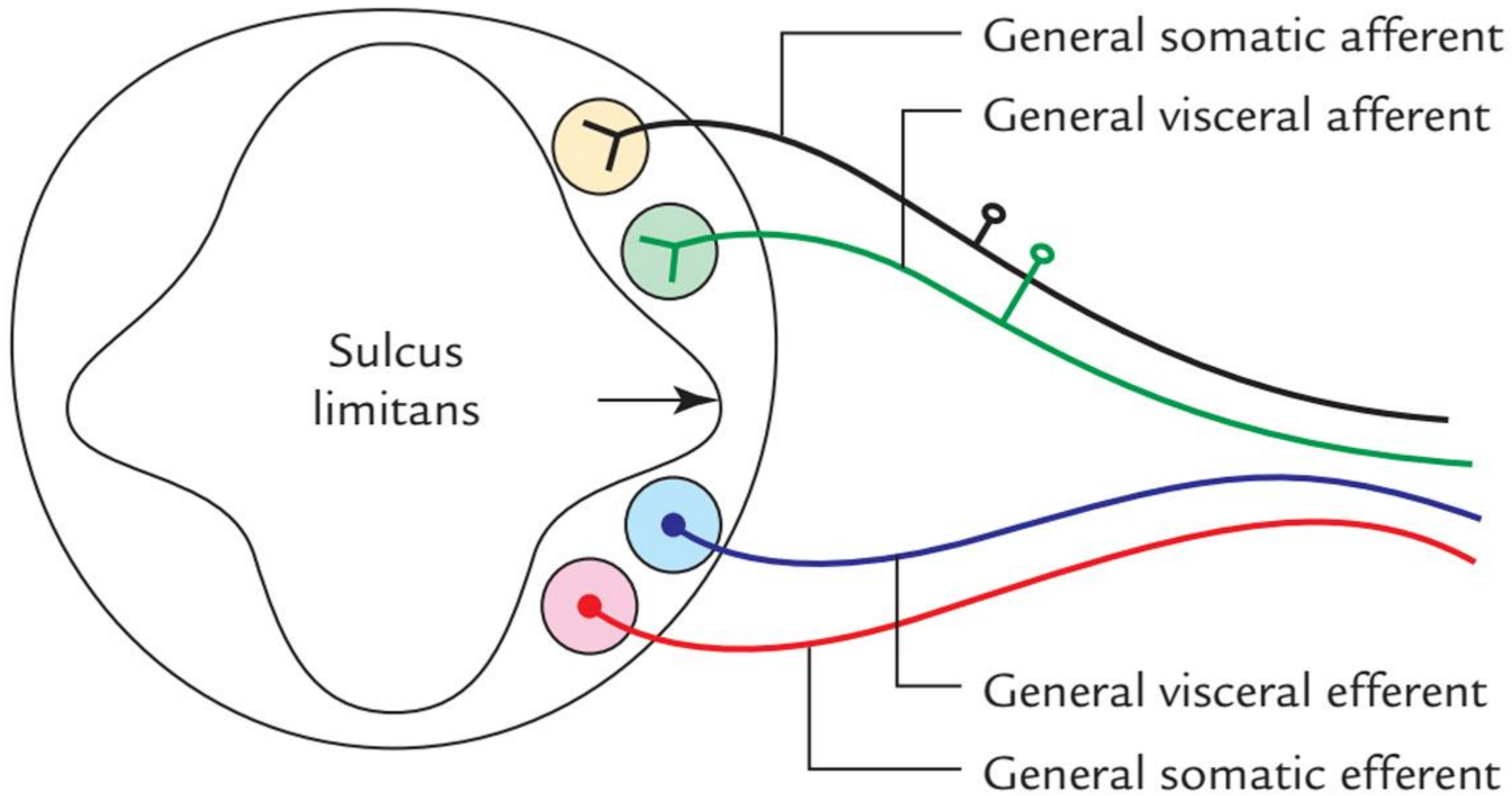
© www.kenhub.com



The Tentorium Cerebelli



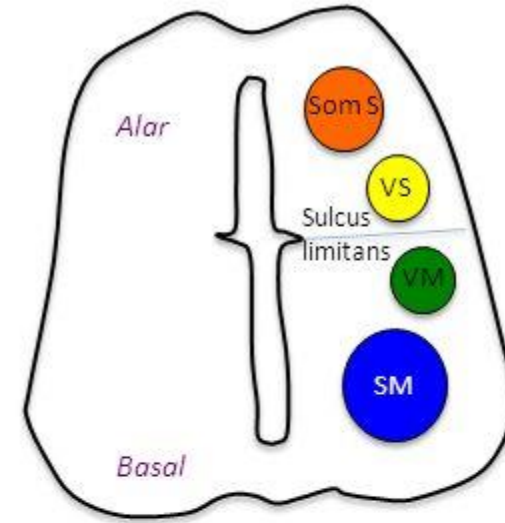




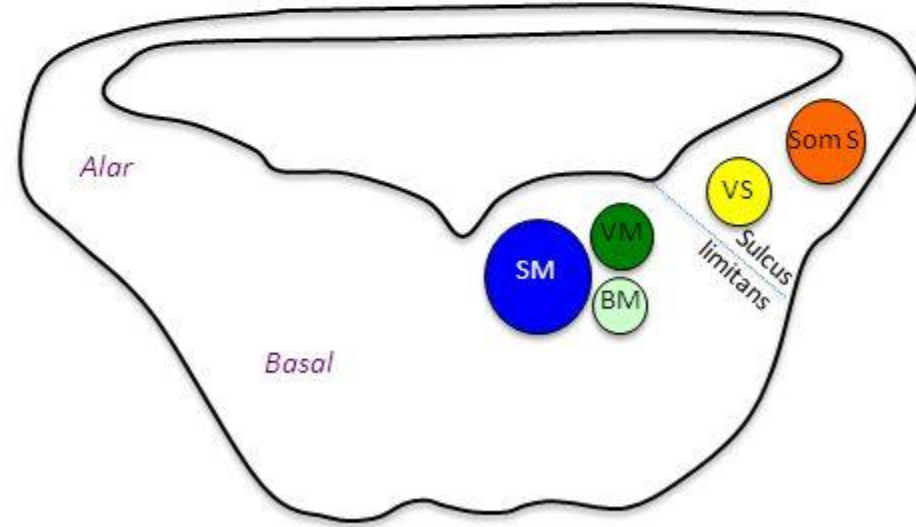
Internal anatomy of brainstem

The fate of the alar and basal laminae

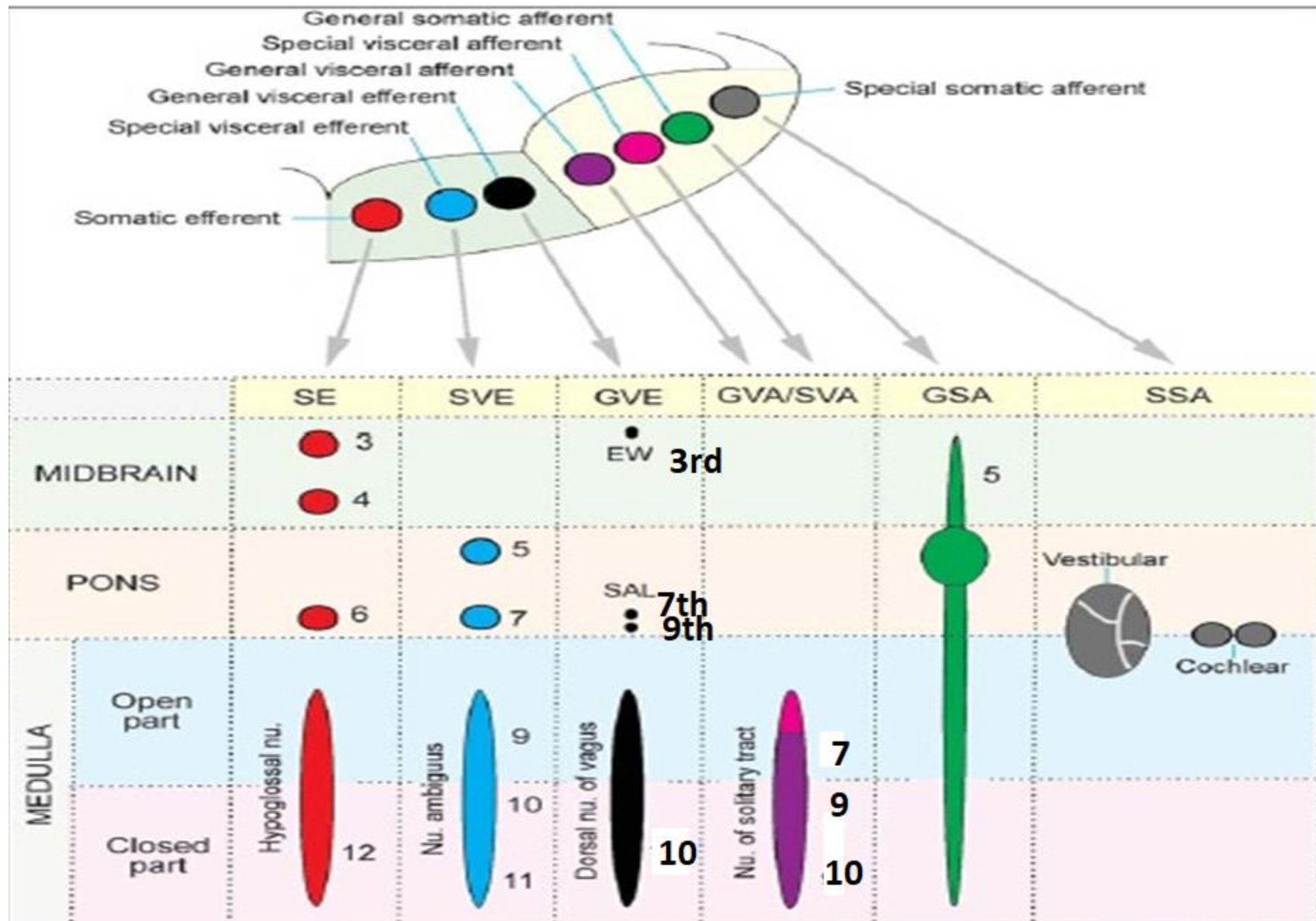
- Why are brain stem sensory nuclei lateral to motor nuclei in brainstem?



Spinal cord



Medulla



Medulla

- Pyriform in shape
- 3cms in length
- 2cms wide in broadest part
- Lower part closed
- Upper part open
- Junction with spinal cord is just above attachment of C1 nerves