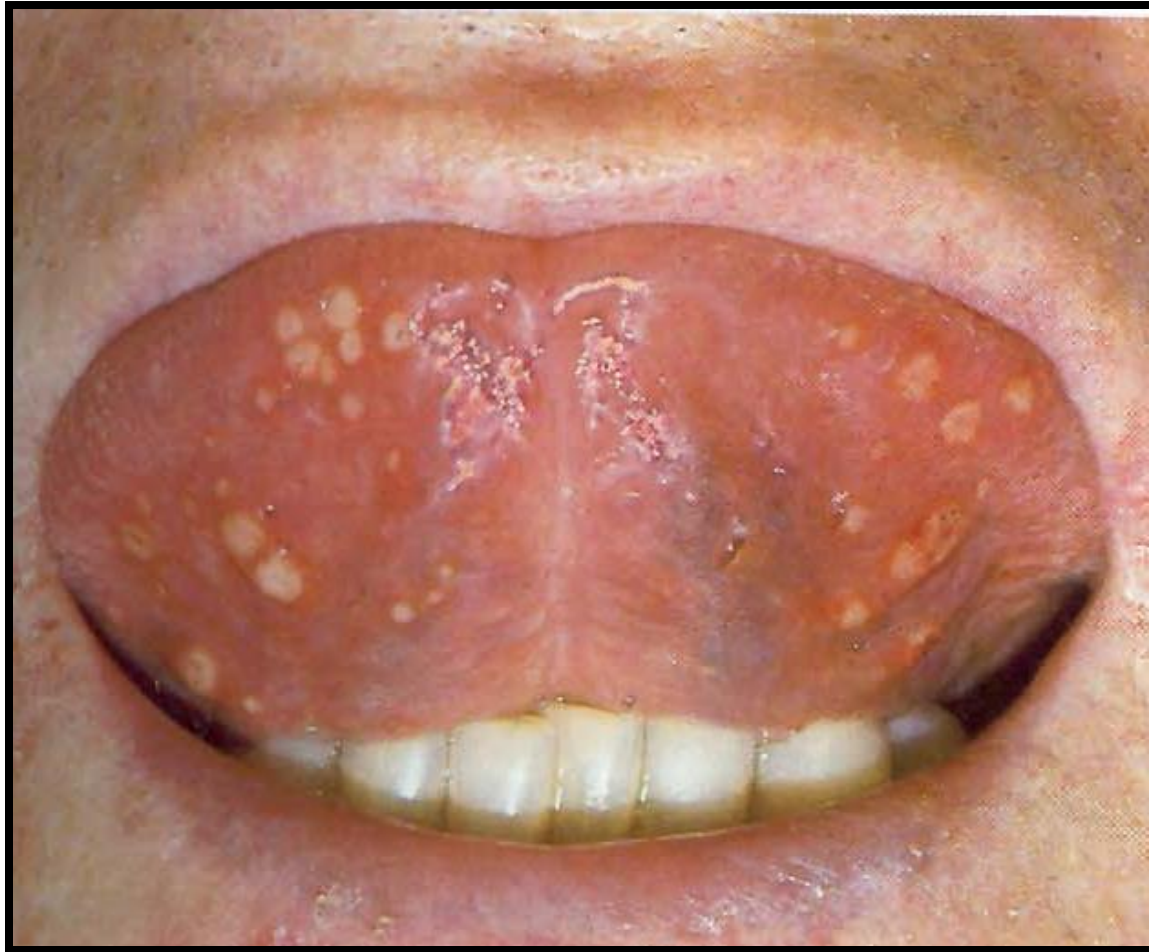


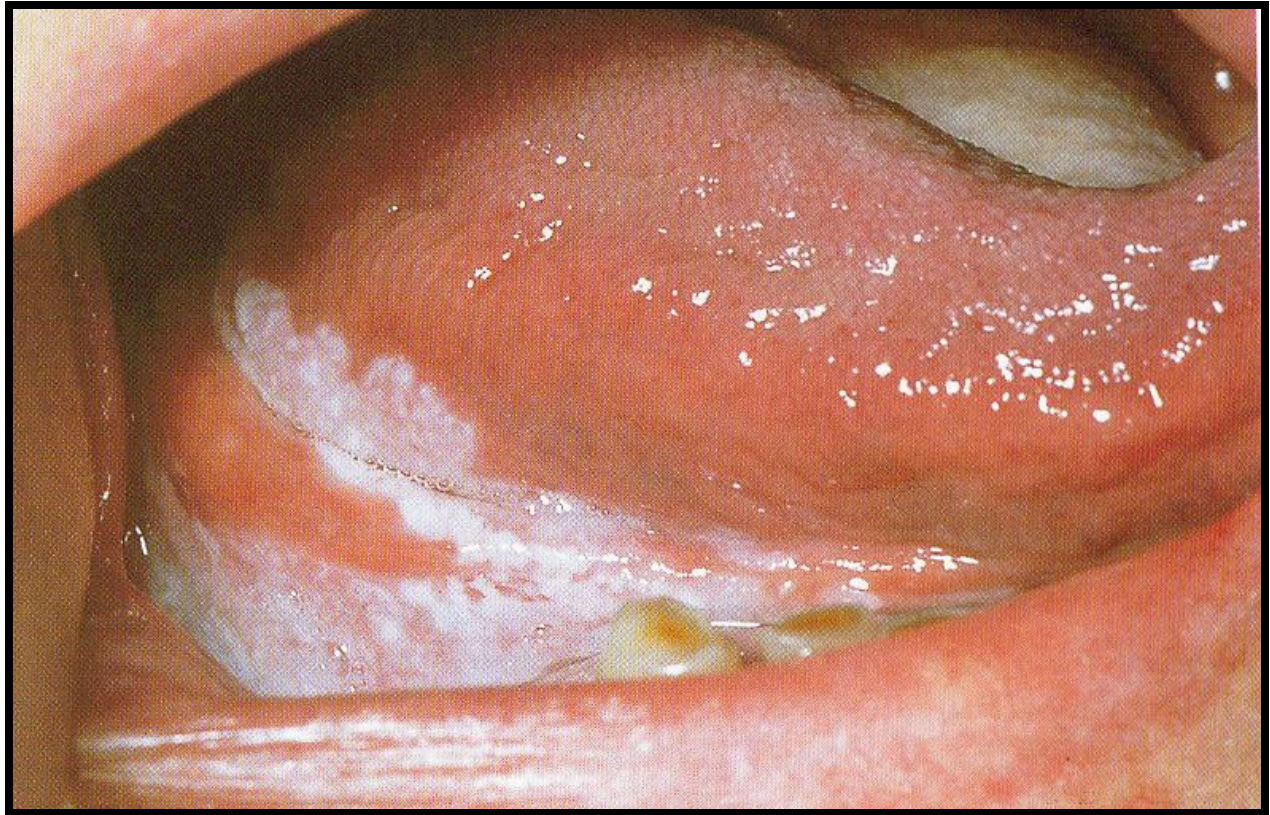
INSTRUCTIONS TO STUDENTS

- Each slide will be shown for 3 minutes
- After 3 minutes slide will automatically change
- Please read the question carefully and answer to the point
- Each slide carries 5 marks
- Revision for 3 minutes after 5th slide
- **DO NOT** attempt to copy !

Describe the pathology seen in the slide, give DD for the same



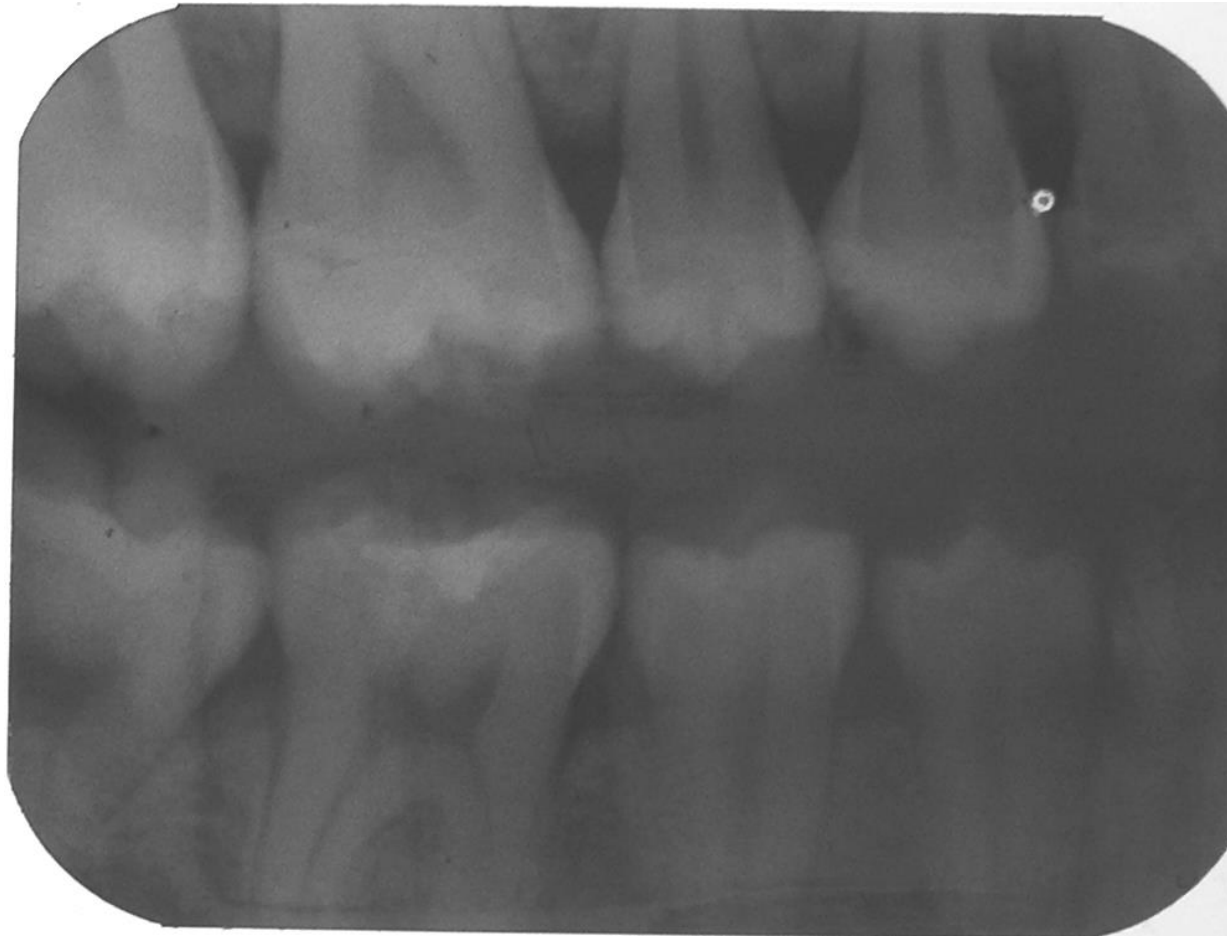
Describe the pathology seen in the slide, give D.D for the same



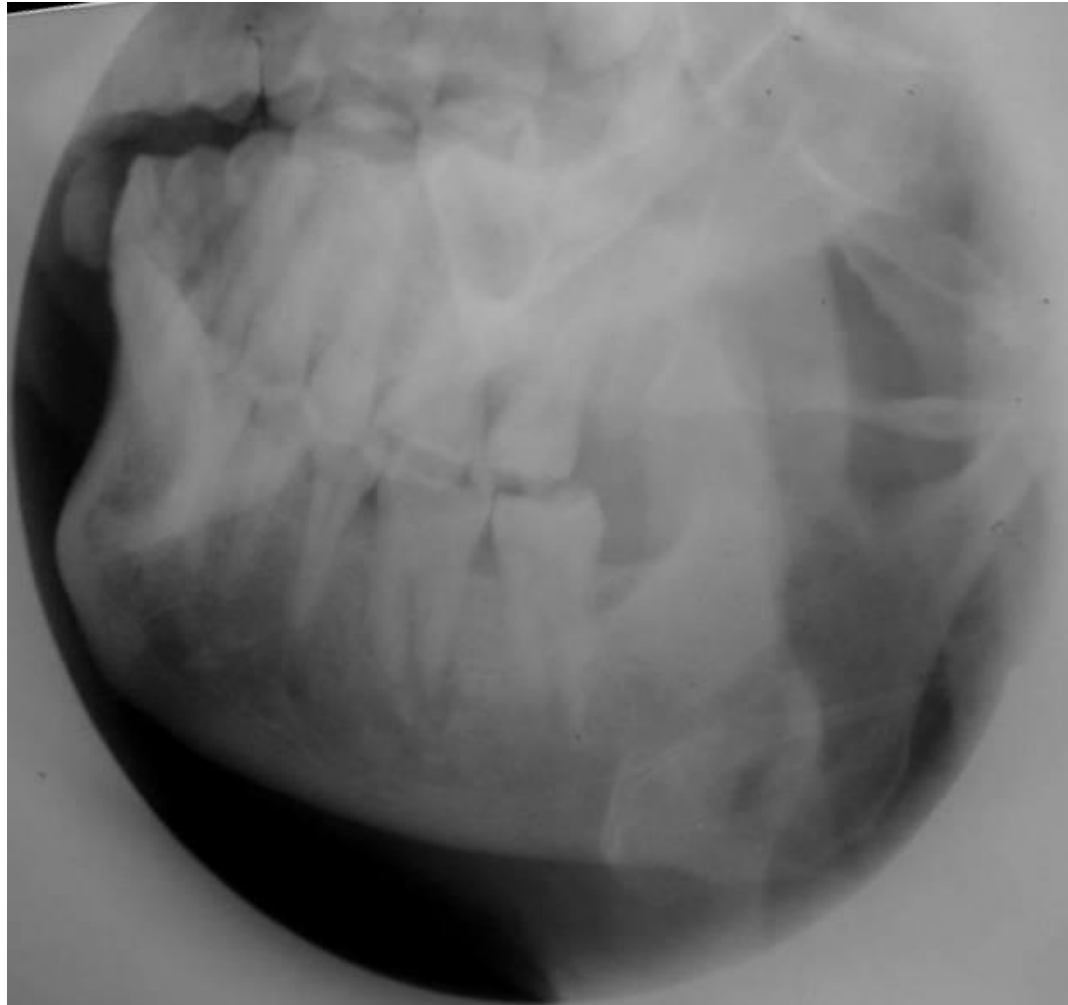
Identify the device seen, give its content and function



Identify the view seen in the slide, give indications for the same



Identify the view, give indications for the same



REVISION

SUBMIT PAPERS