

INSTRUCTIONS TO STUDENTS

- Each slide will be shown for 3 minutes
- After 3 minutes slide will automatically change
- Please read the question carefully and answer to the point
- Each slide carries 5 marks
- Revision for 3 minutes after 5th slide
- **DO NOT** attempt to copy !

Describe the lesion seen in the slide, give DD for the same



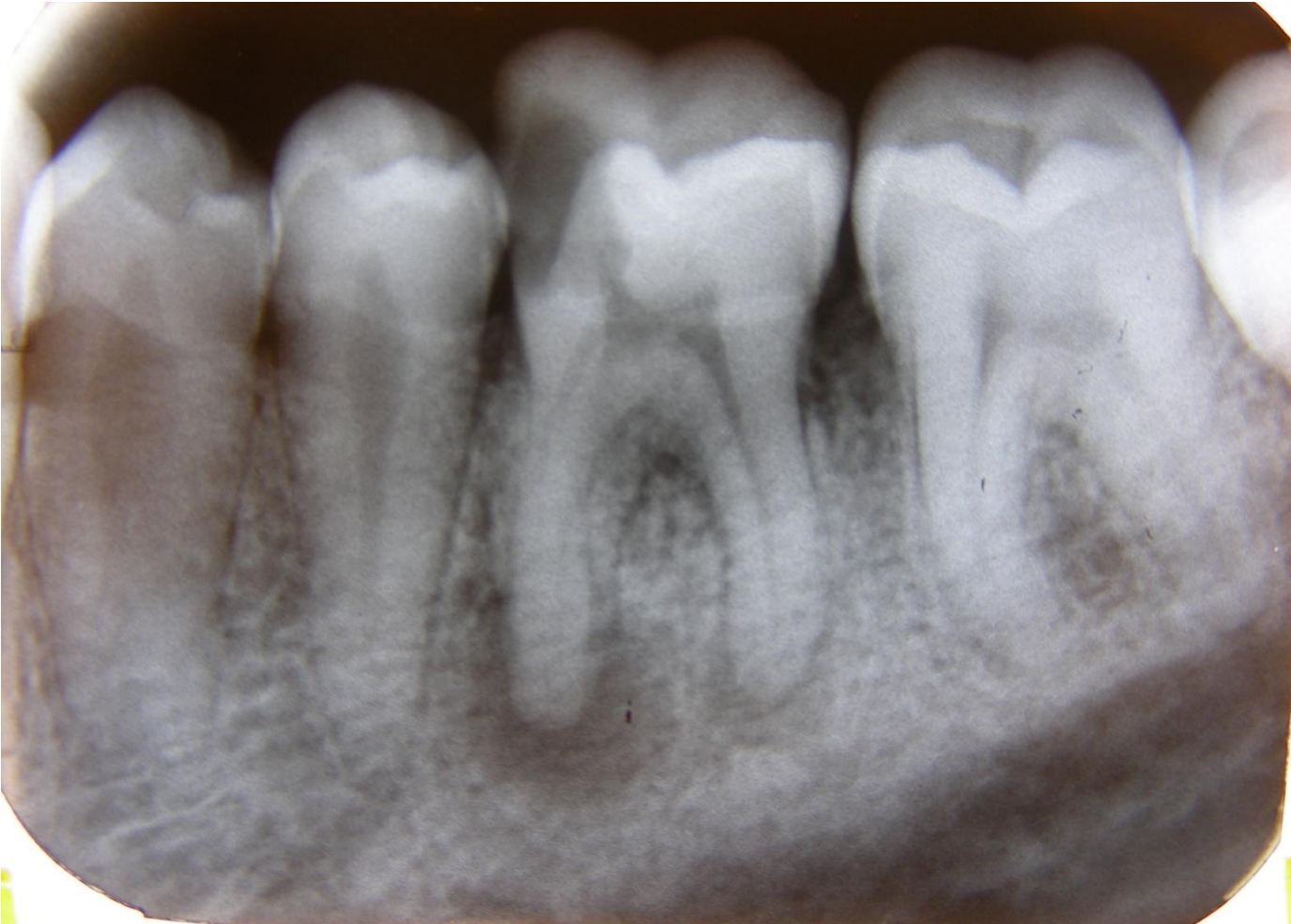
Describe the pathology seen in the slide, give D.D for the same



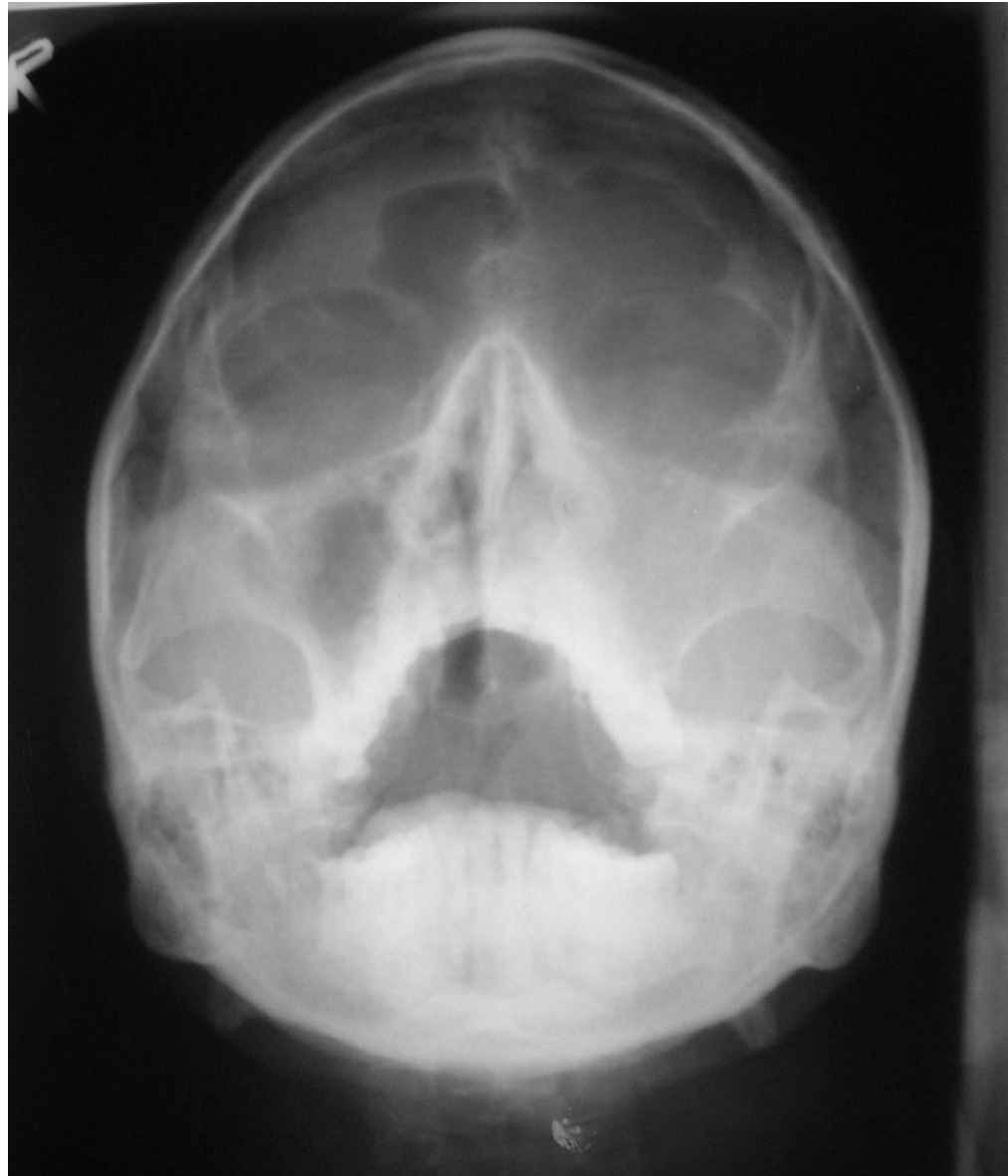
Identify the device seen, describe its uses



Describe the pathology seen in the slide, give DD for the same



Identify the view, give indications for the same



REVISION

SUBMIT PAPERS