

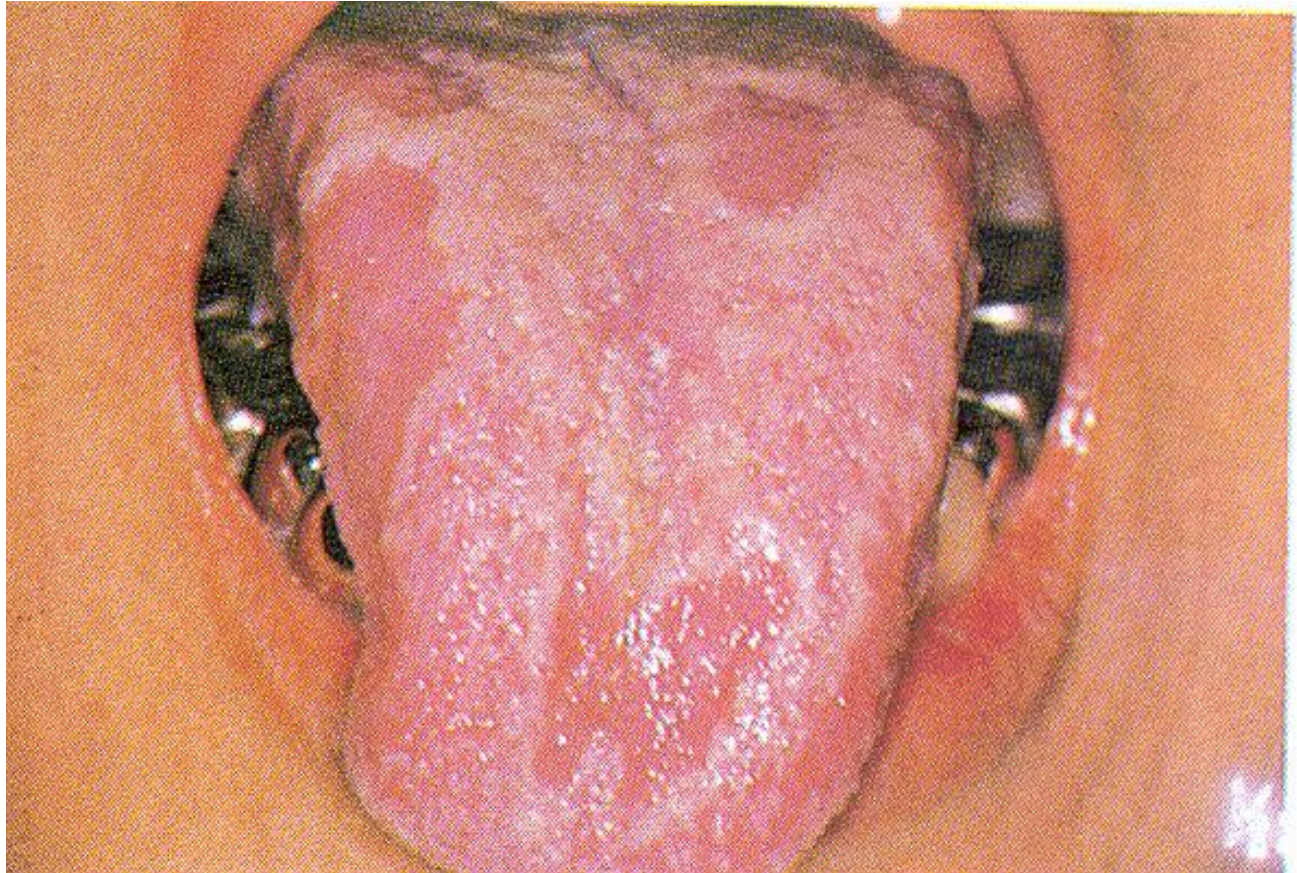
## INSTRUCTIONS TO STUDENTS

- Each slide will be shown for 3 minutes
- After 3 minutes slide will automatically change
- Please read the question carefully and answer to the point
- Each slide carries 5 marks
- **DO NOT** attempt to copy !

**Describe the pathology seen in the slide. Enumerate the causes for the same**



**Describe the pathology seen in the slide, give most probable diagnosis and D.D for the same**



**Describe the pathology seen in the slide. Give most probable diagnosis and DD for the same**



**Describe the pathology seen in the radiograph. Give most probable diagnosis and DD for the same**



. Describe the pathology seen in the slide. Give DD for the same



**REVISION**

**SUBMIT PAPERS**