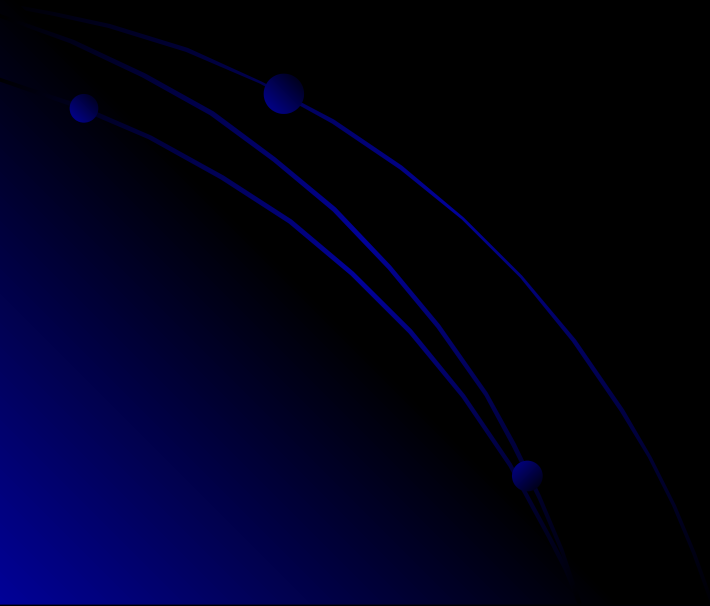
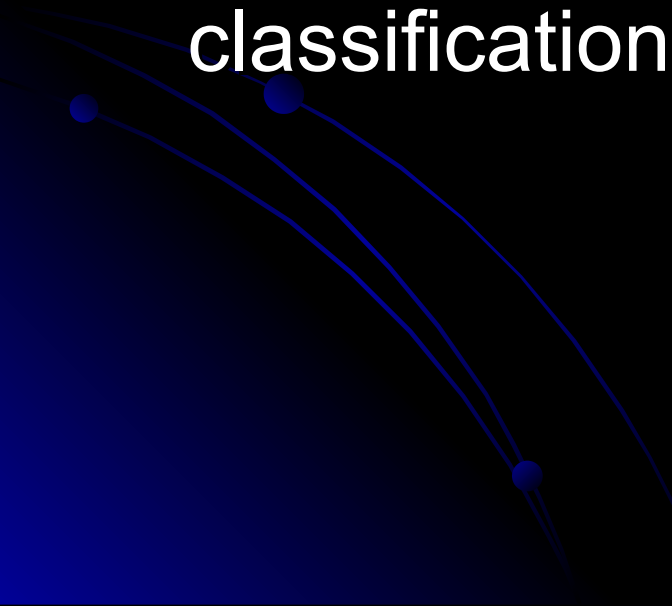


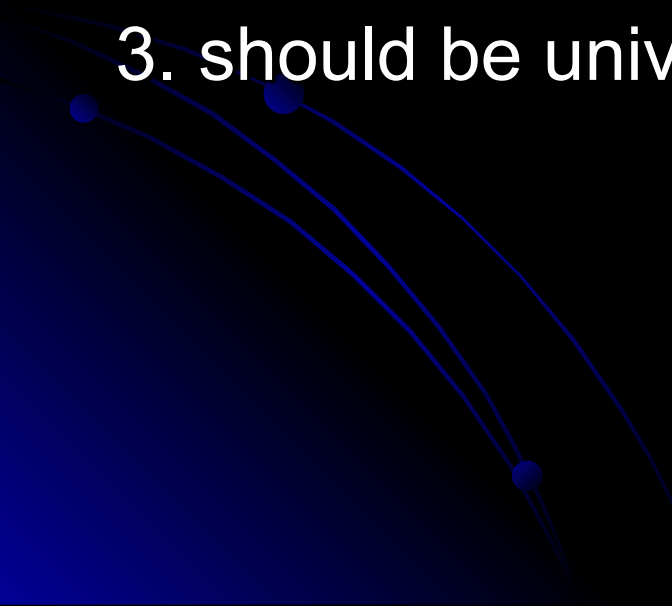
# **CLASSIFICATION OF REMOVABLE PARTIAL DENTURES-**



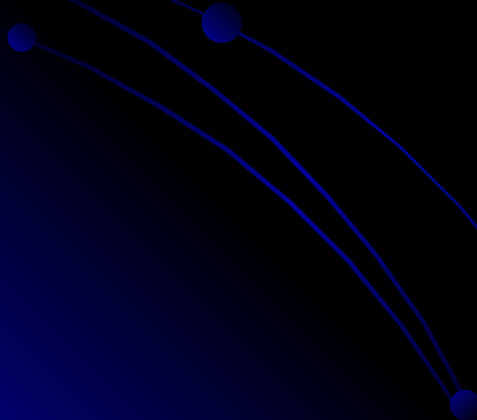
# NEED OF CLASSIFICATION-

- Facilitates case history recording.
  - Exchange of views between practitioners.
  - To design the denture as per the classification & load bearing area.
- 

# REQUIREMENT OF A CLASSIFICATION-

1. should permit immediate visualization of the type of partially edentulous arch being considered.
  2. should permit immediate differentiation between tooth born and tooth and tissue supported removable partial denture.
  3. should be universally acceptable.
- 

- classification of removable partial denture have been proposed by many like Beckett, Skinner, Avant, Millers and others.
- But Kennedy's classification is most widely used.

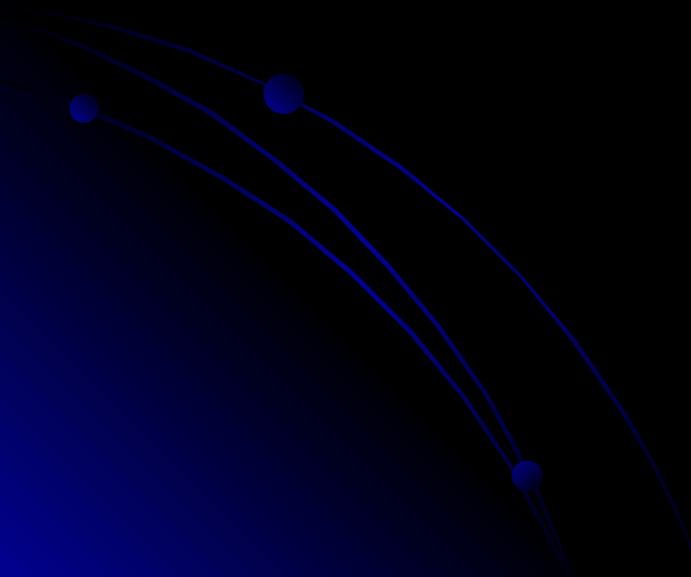
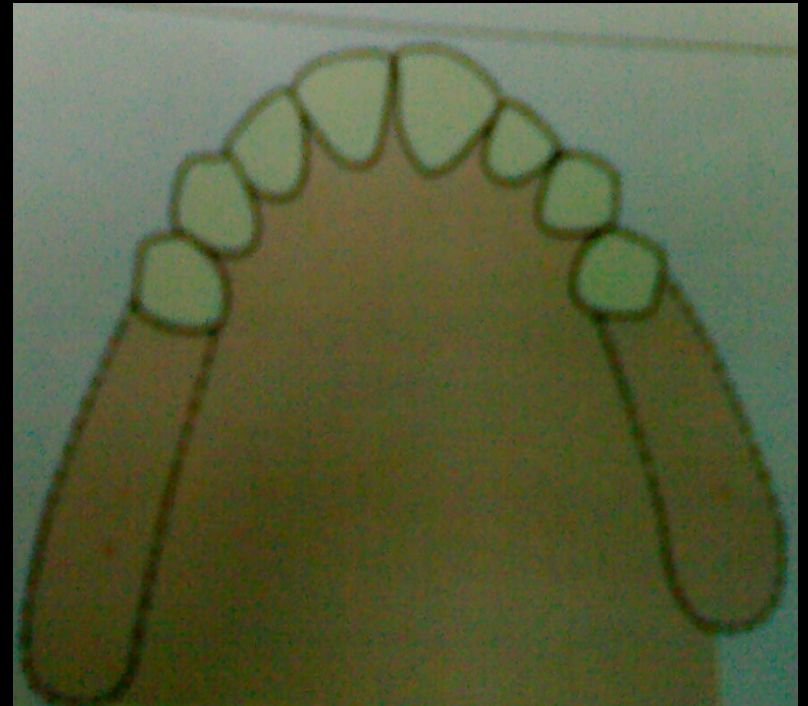


## ***KENNEDY'S CLASSIFICATION-***

- Proposed by Dr. **Edward Kennedy** in 1923.
- Kennedy divided all the partially edentulous arches into four main types.
- Edentulous arches other than those determining main type where designated as modification area .

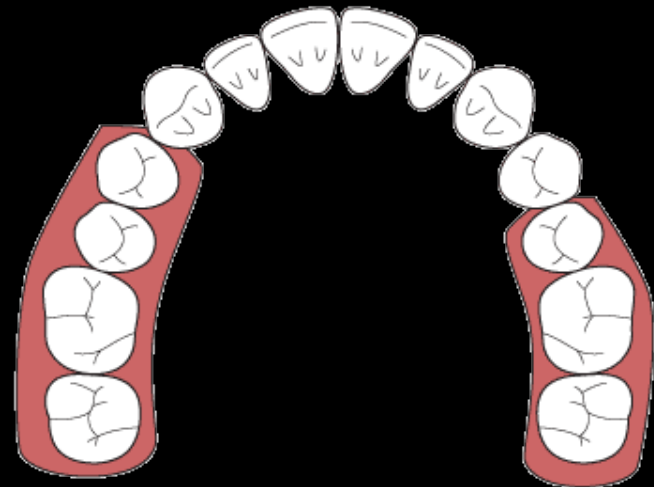
# CLASS I

- Bilaterally edentulous areas located posterior to remaining natural teeth



# KENNEDY CLASS I

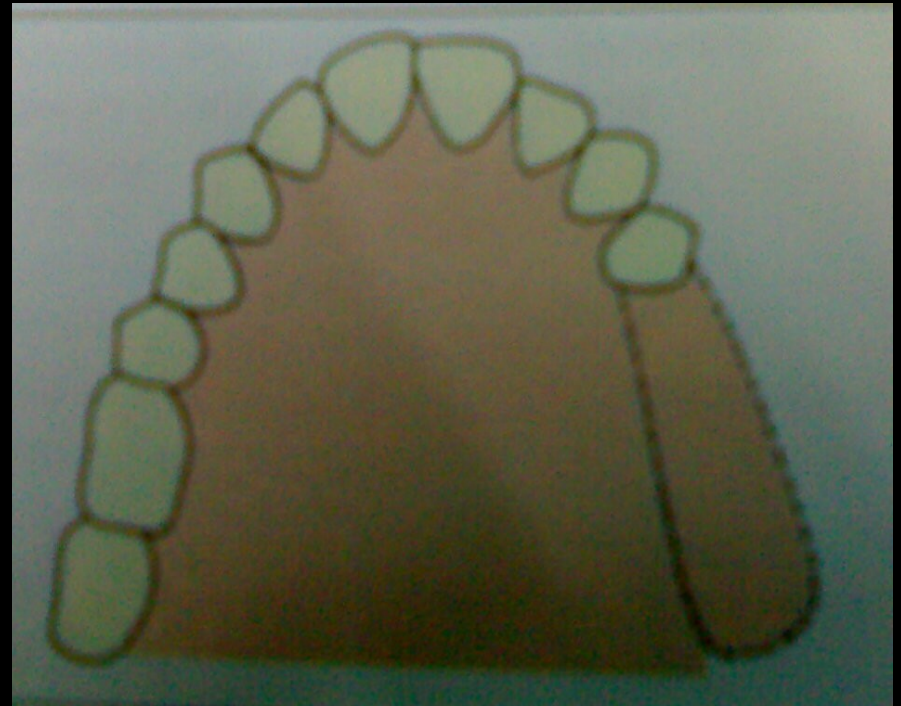
CLASS I - Bilateral Posterior Edentulous Areas



Source: Jeff Shotwell, University of Michigan, 2008

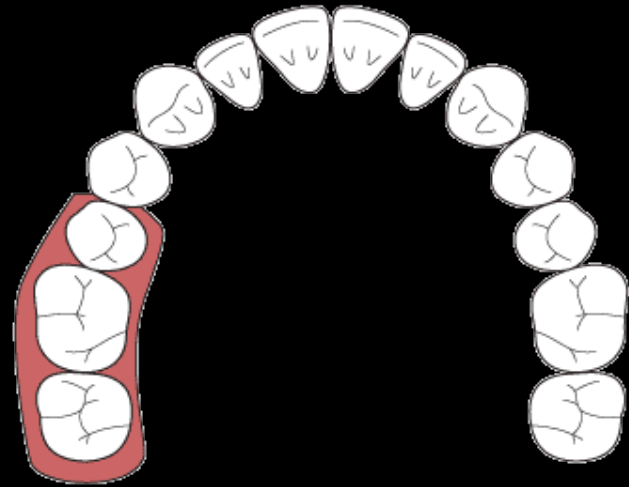
# CLASS II

- A unilateral edentulous area located posterior to remaining natural teeth.



# KENNEDY CLASS II

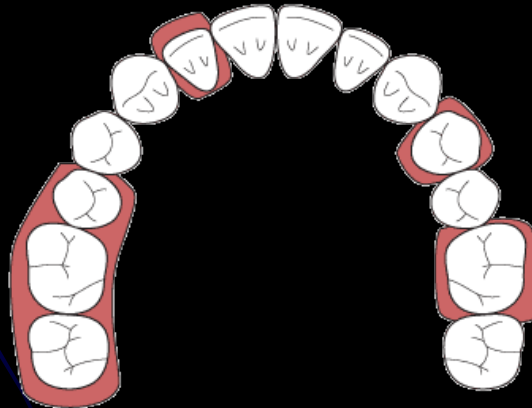
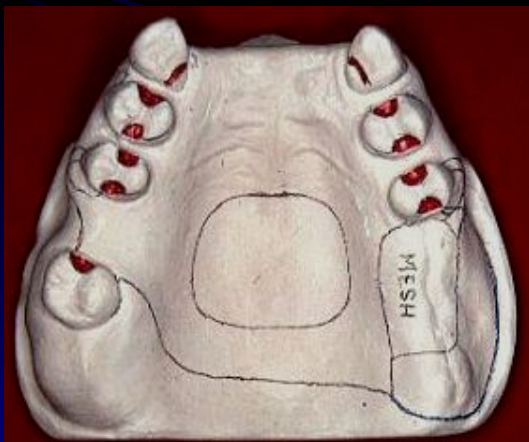
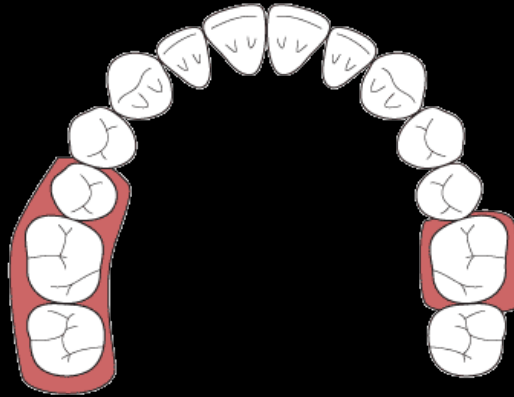
CLASS II - Unilateral Posterior Edentulous Area



Source: Jeff Shotwell, University of Michigan, 2008

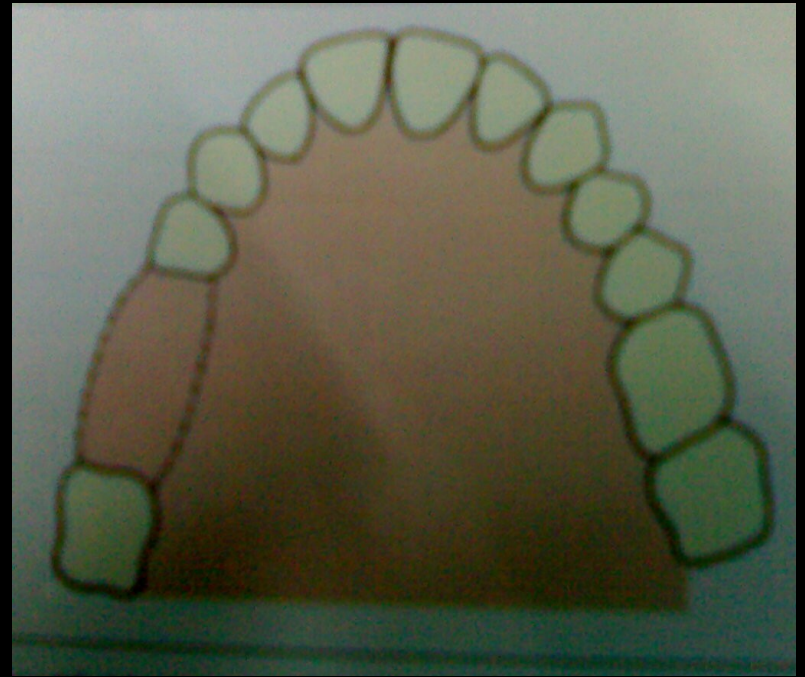
# CLASSIFICATION WITH MODIFICATION AREAS

## CLASS II



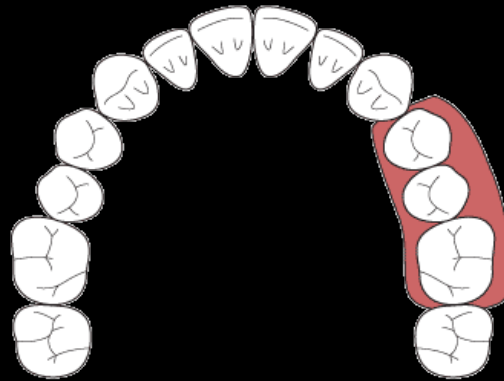
# CLASS III

- A unilateral edentulous area with natural teeth remaining anterior and posterior to it.

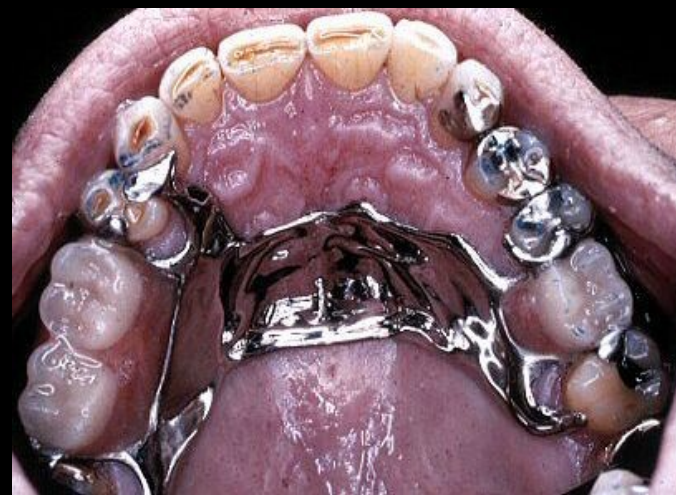


# KENNEDY CLASS III

CLASS III - Unilateral Edentulous Area(s) bounded by Remaining Tooth/Teeth

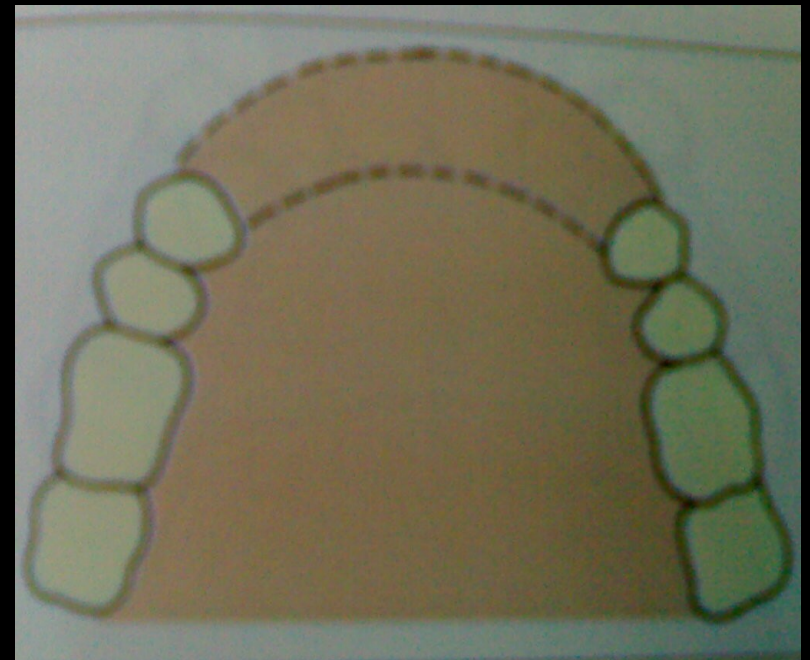


# KENNEDY CLASS III

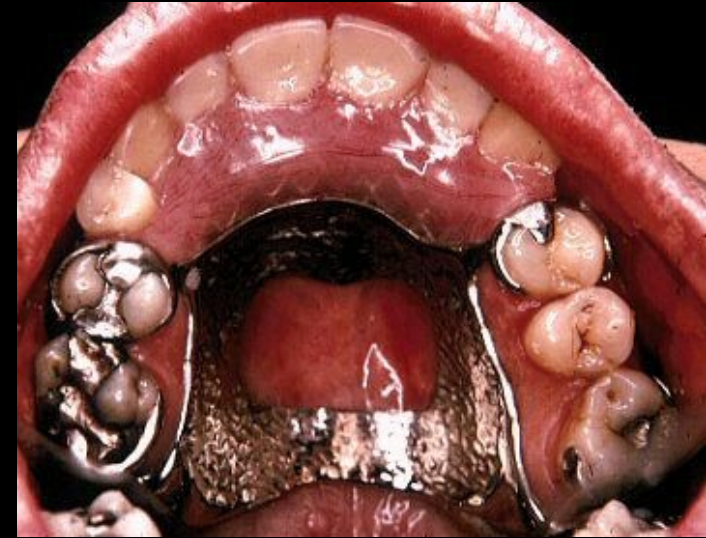
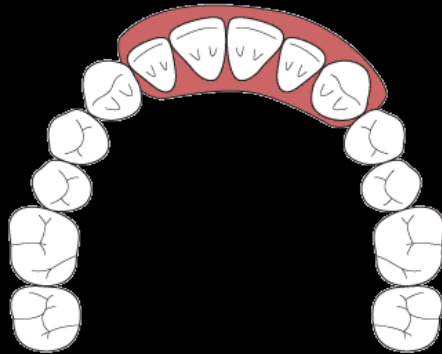
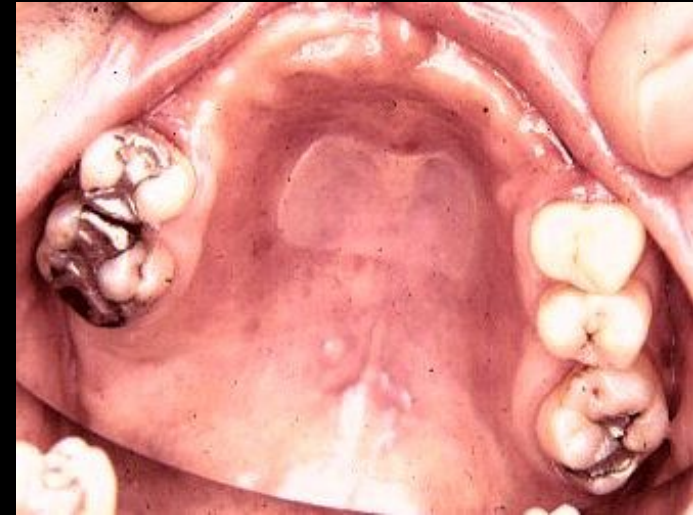
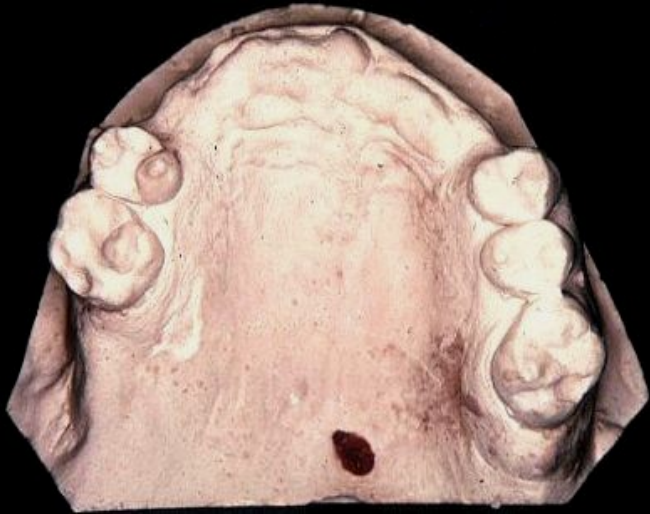


# CLASS IV

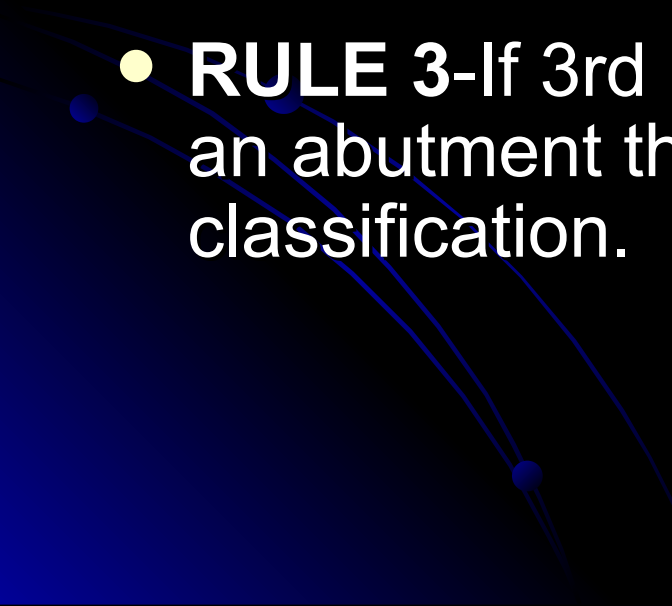
- A single but bilateral (i.e. crossing the midline) edentulous area located anterior to remaining natural teeth




# KENNEDY CLASS IV

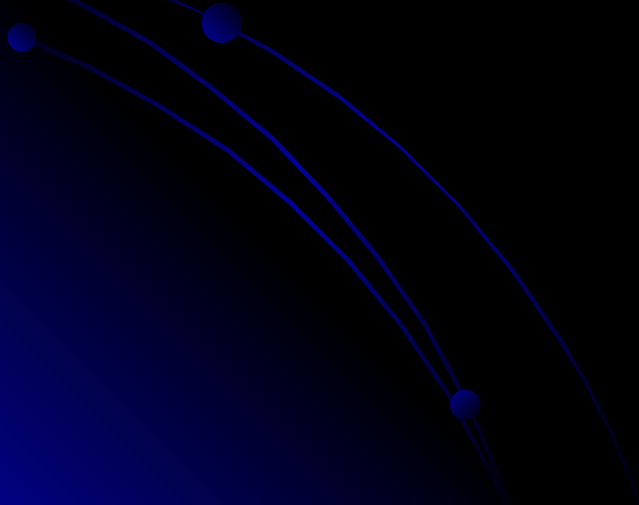


# APPLEGATES RULES FOR APPLYING THE KENNEDY'S CLASSIFICATION -

- **RULE 1**-classification should follow rather than precede any extraction of teeth that might alter the original classification.
  - **RULE 2**-If 3rd molar is missing and not to be replaced it should not be considered in classification.
  - **RULE 3**-If 3rd molar is present and is used as an abutment then it should be considered in classification.
- 

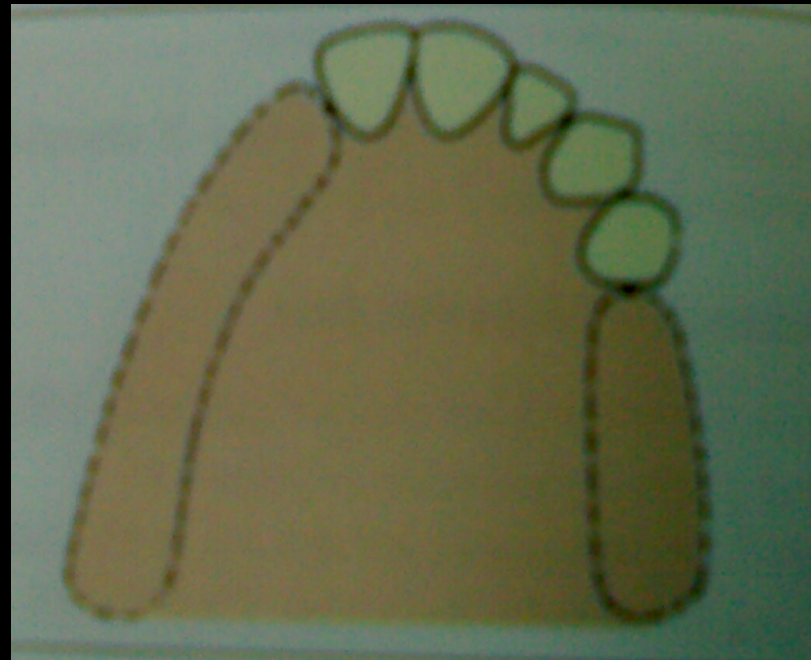
- **RULE 4-**If 2nd molar is missing and not to be replaced then it is not considered in the classification.
  - **RULE 5-** The most posterior edentulous area always determines the classification.
  - **RULE 6-**Edentulous area other than those determining the classification are referred as modification and designated by number
- 

- **RULE 7**-Extent of modification is not considered ,only the number of additional edentulous areas is considered.
- **RULE 8**-There is no modification area in class IV

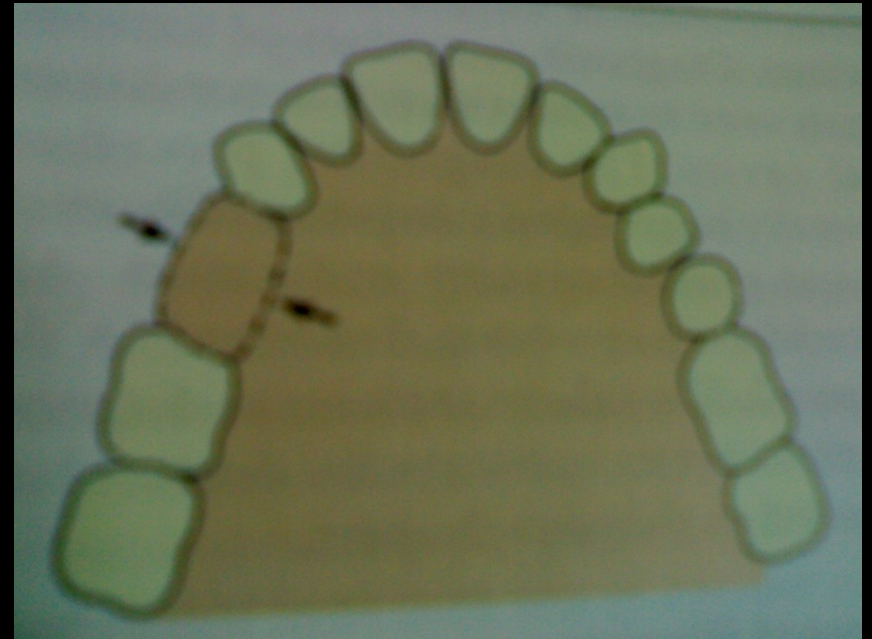


# CLASSIFICATION DEPENDING ON - DISTRIBUTION OF LOAD

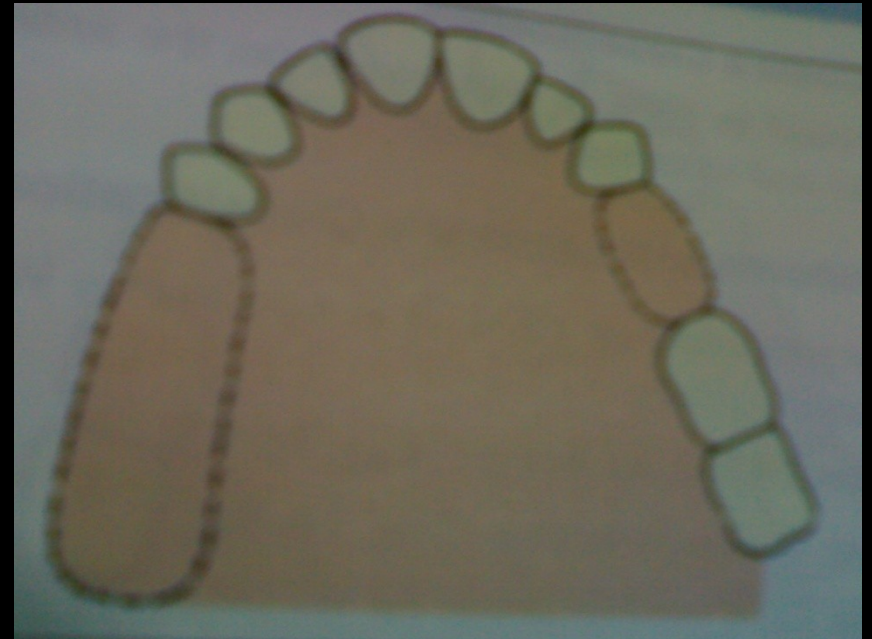
- **CLASS I-** mucosa borne.



- **CLASS II-Tooth borne.**

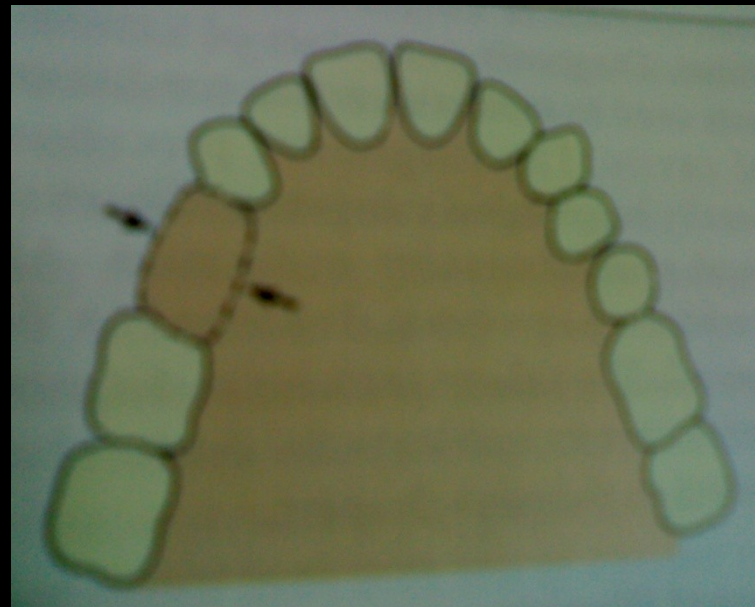


- **CLASS III-**  
combination of tooth  
and mucosa

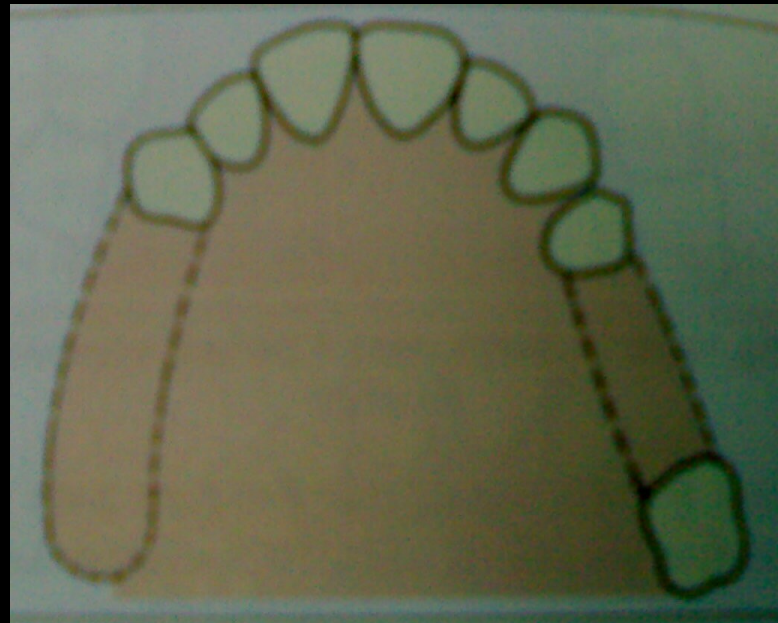


# ***BECKETT'S CLASSIFICATION-***

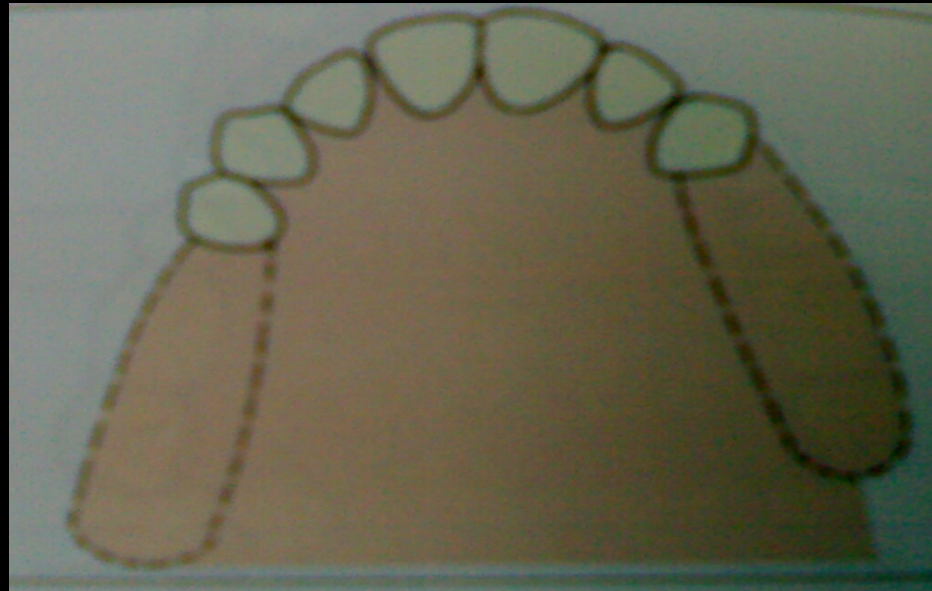
- **CLASS I SADDLE**-entirely tooth supported .



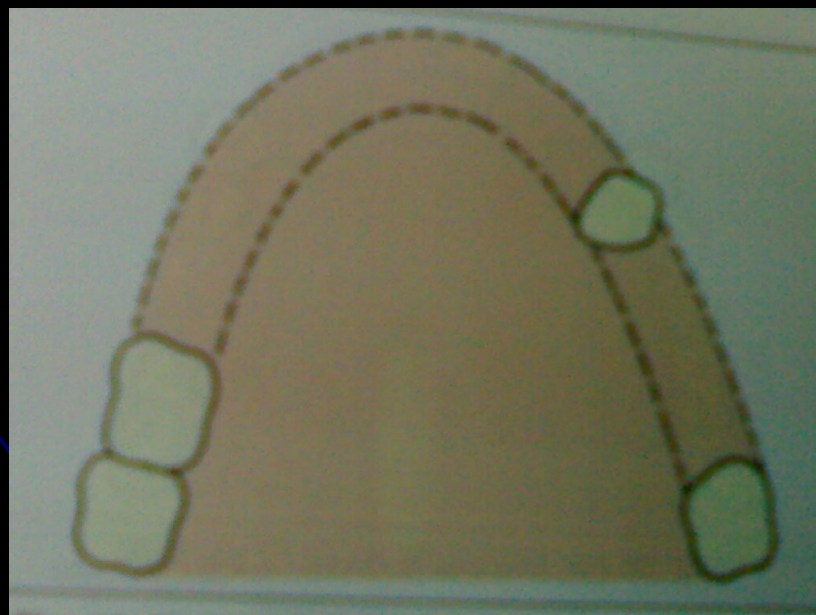
- **CLASS II SADDLE**-entirely mucosa supported.
- **2 types in this class-**
- **1) all free end saddle**



- ) those bounded saddles where obviously the length of saddle



- 3) those bounded saddles about which a problem exists. saddles are placed in this class temporarily while it is considered they should fall in class 1 or 2.



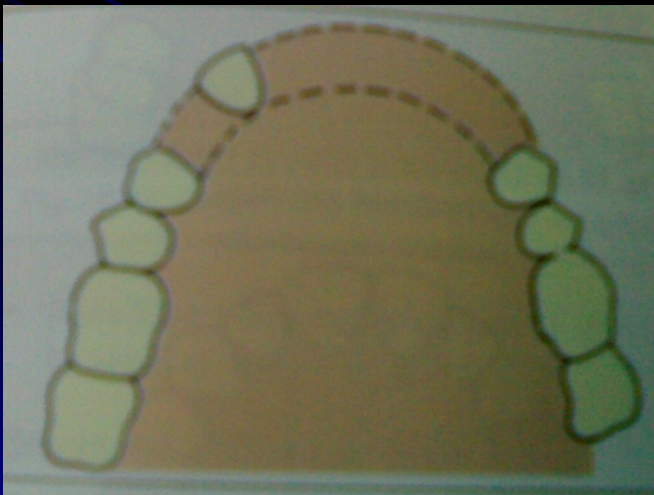
# GODFERY'S CLASSIFICATION-

Based on location and size of edentulous spaces.

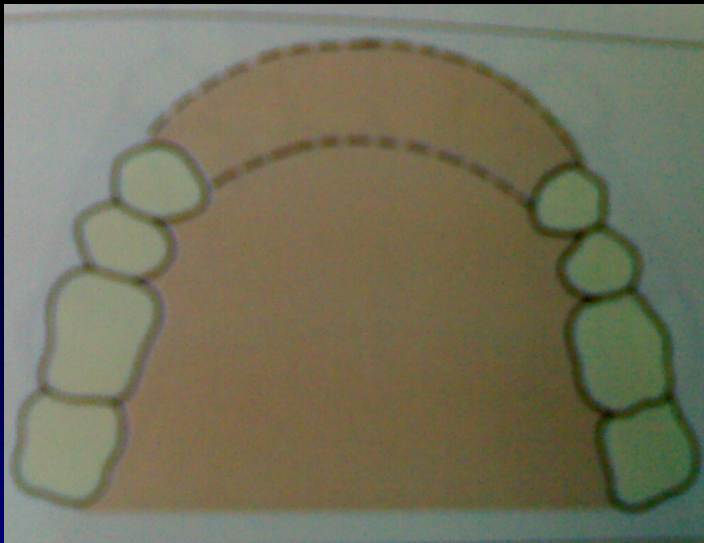
**CLASS A** – Tooth borne denture base in anterior part of mouth.

unbroken 5-tooth space.

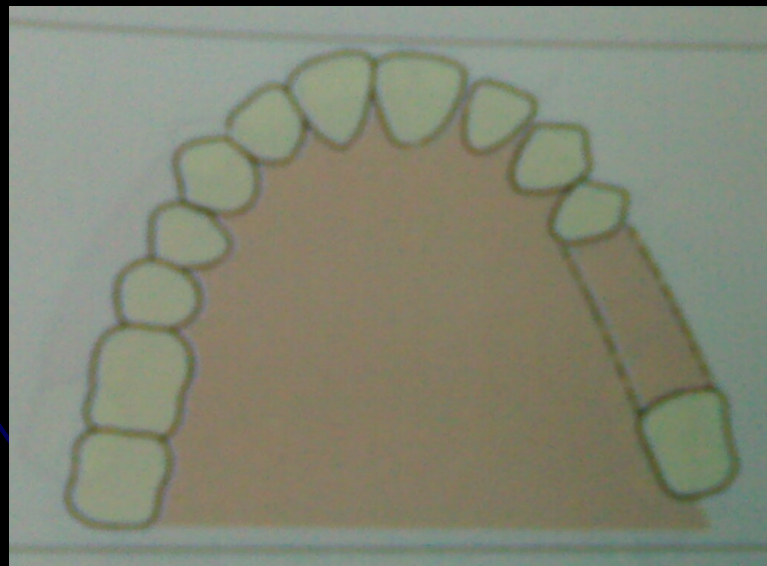
broken 5- tooth spaces.



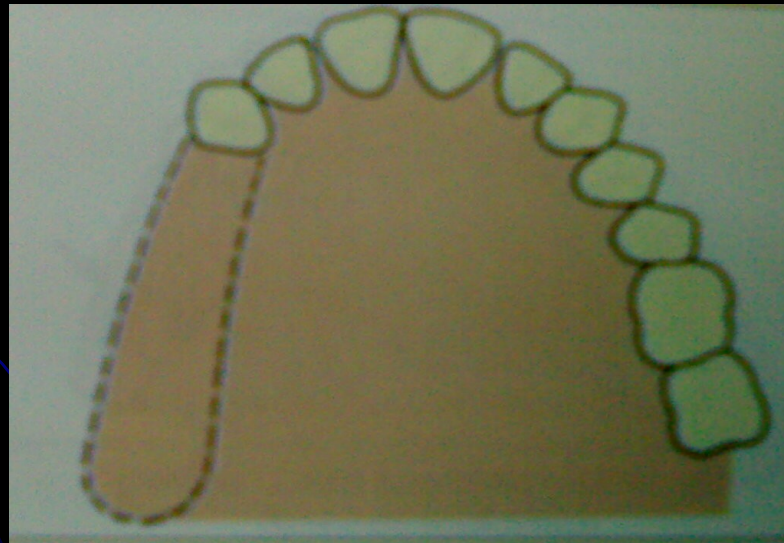
- **CLASS B** – Mucosa borne region in anterior region.
- unbroken 6 tooth space.
- broken 5 tooth space.



- **CLASS C** –Tooth borne edentulous area in posterior part of mouth.
- broken/unbroken 2or 3 tooth space.

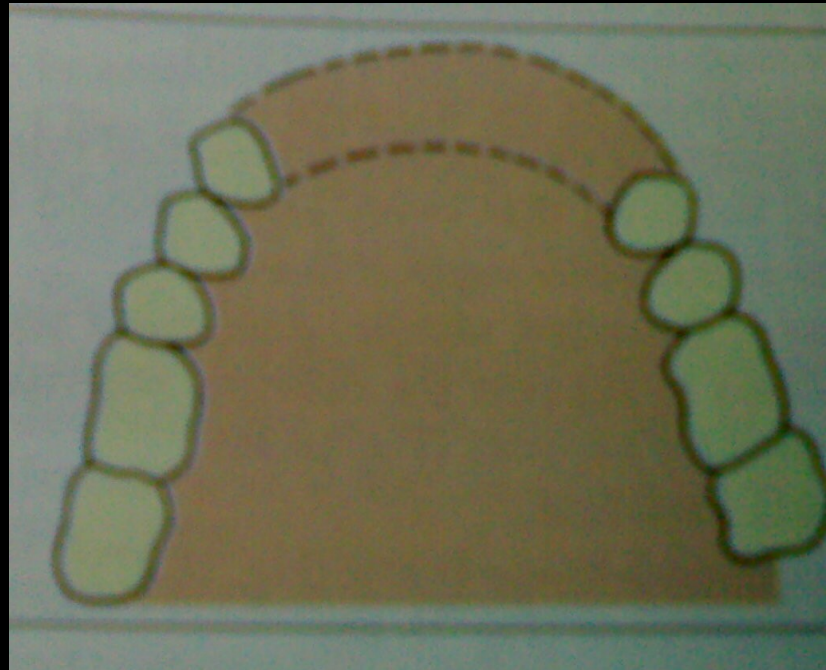


- **CLASS D** – Mucosa borne edentulous area in posterior region.
- unbroken 3,2, single tooth space.

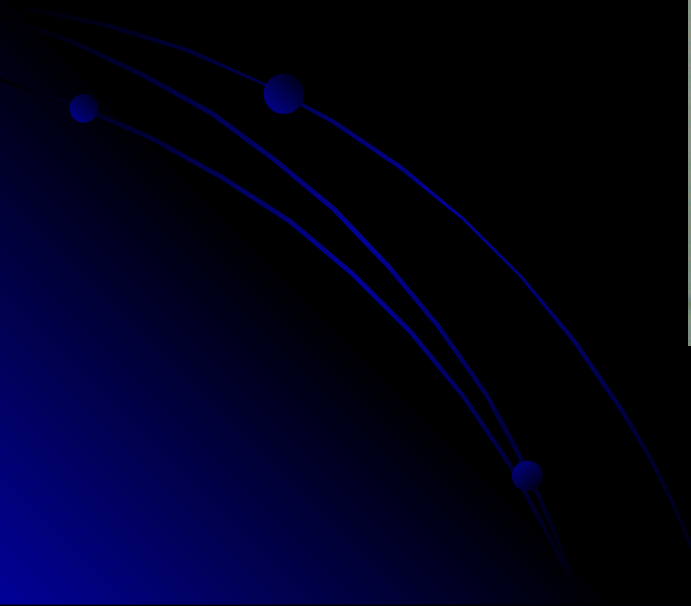
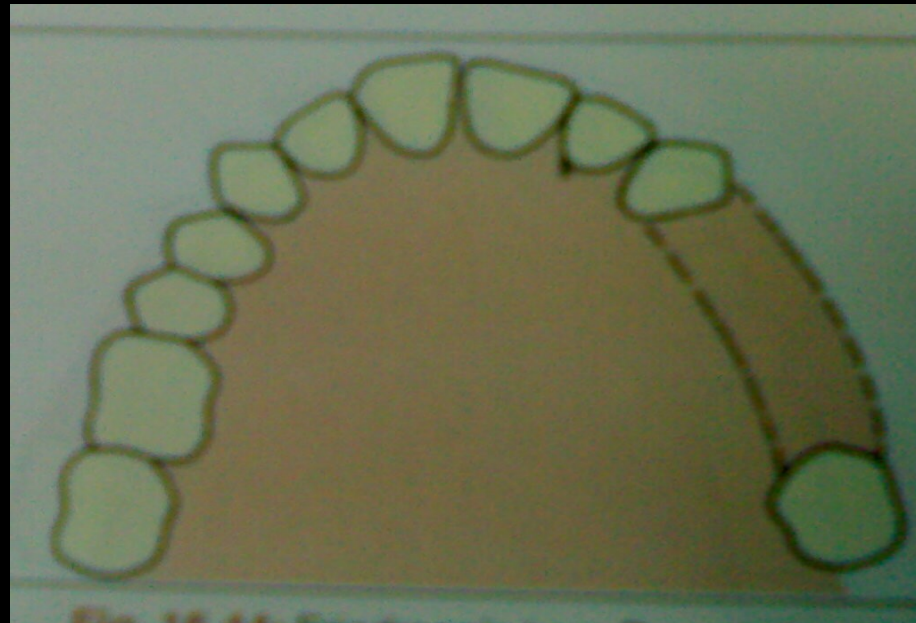


# FRIEDMAN'S CLASSIFICATION-

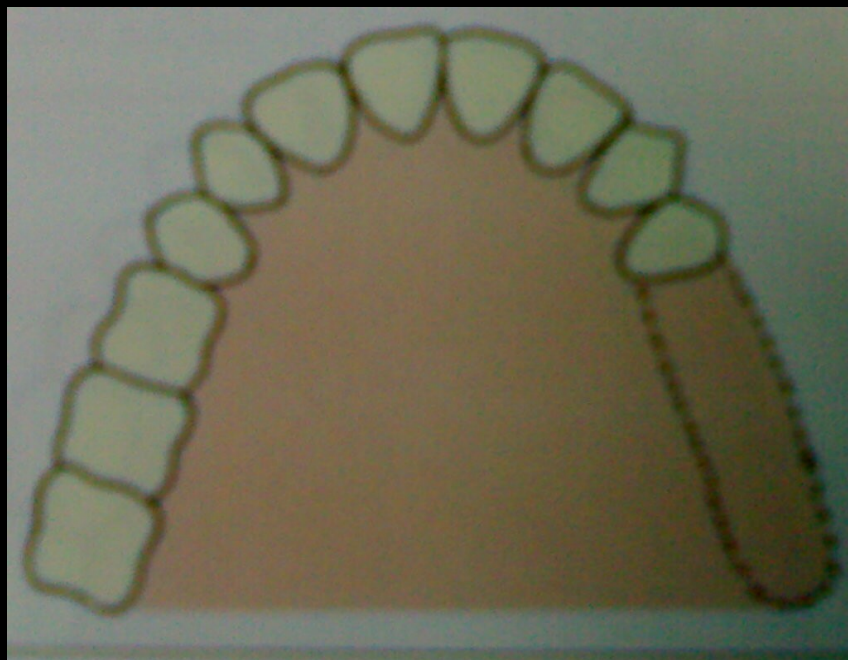
- **CLASS A- Anterior**



- **CLASS B-** Bounded posteriorly.

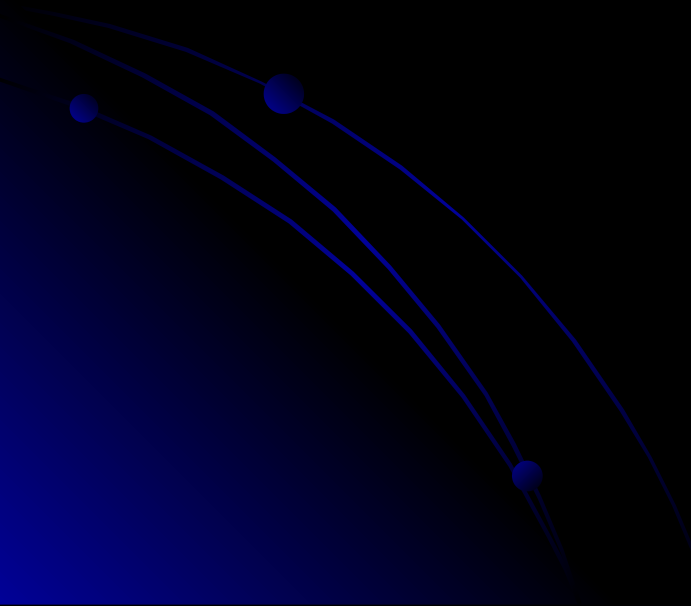


- **CLASS C- Cantilever.**



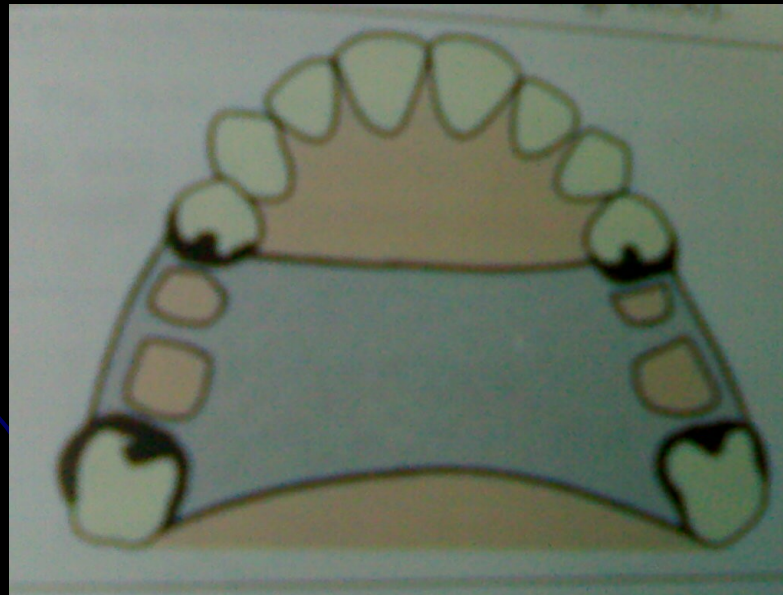
# AVANT'S CLASSIFICATION-

- Based on anterior and posterior segment of arch.
- It resembled Kennedy's classification

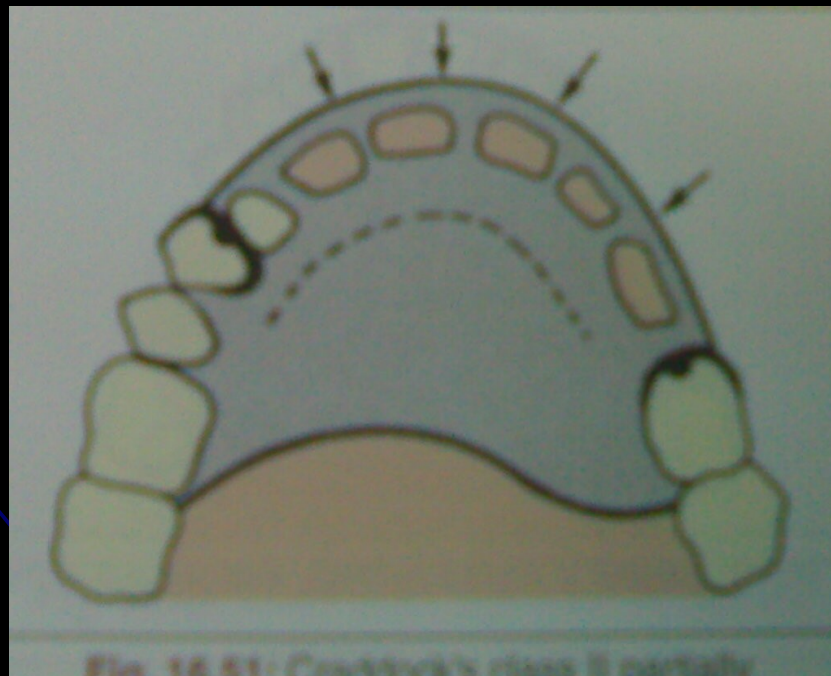


# CRADDOCK'S CLASSIFICATION-

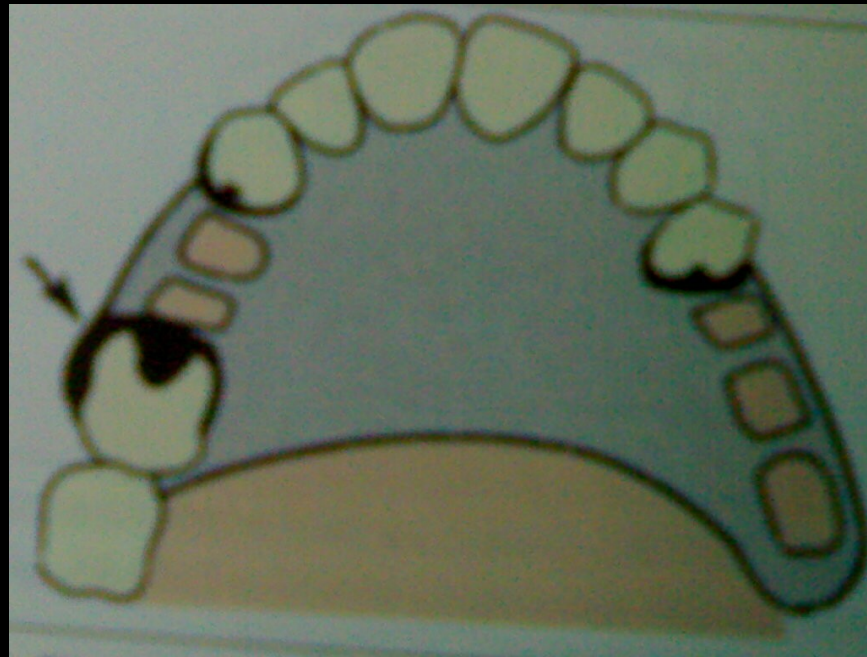
- **CLASS I**-Saddle supported on both sides by substantial abutment teeth.



- **CLASS II**-Vertical biting forces applied to denture resisted entirely by soft tissue

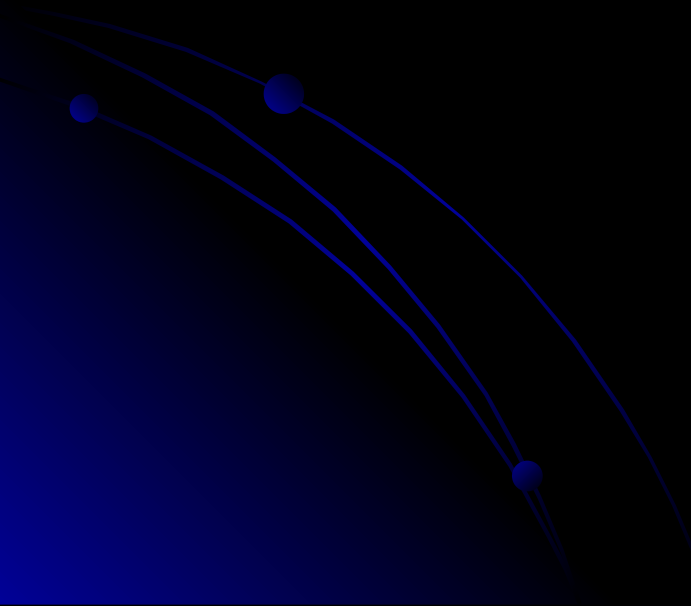


- **CLASS III**-Tooth supported at only one end of saddle.

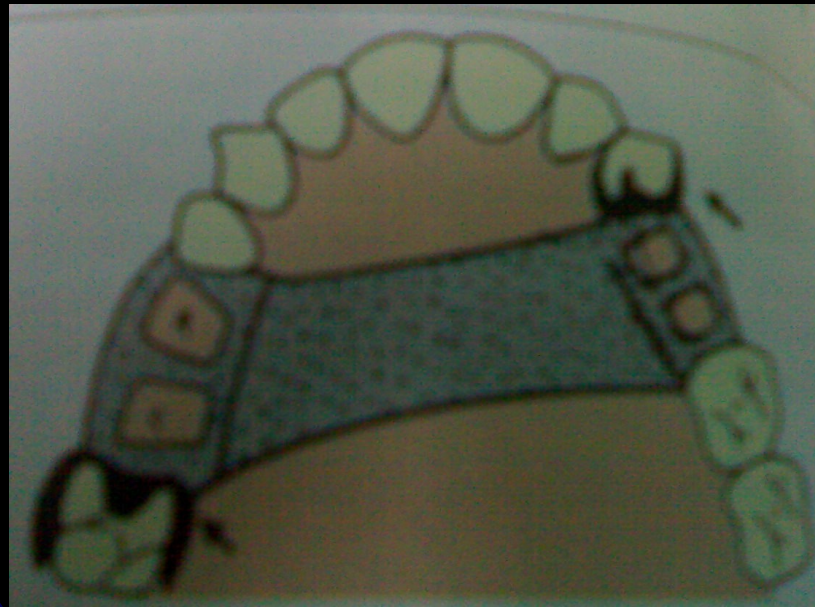


# CUMMER'S CLASSIFICATION-

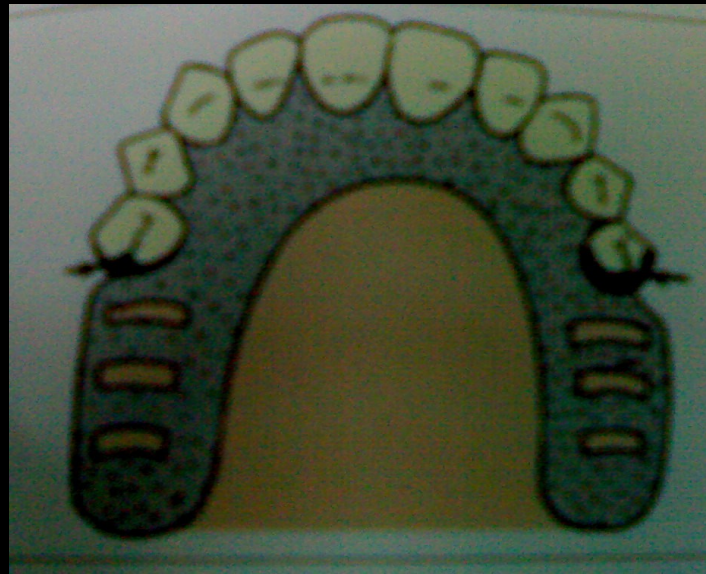
- In 1920 by cummer classified in 4 types based on position Of direct retainer.



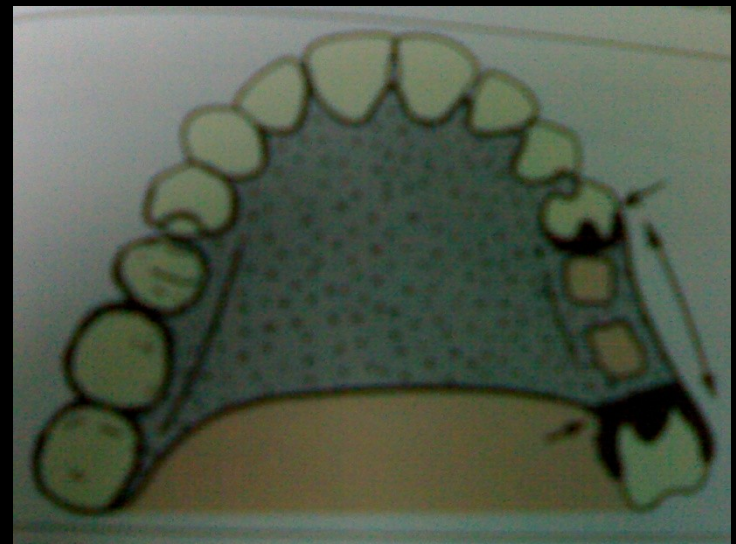
- **DIAGONAL**- Two direct retainers are diagonally opposite to one another.



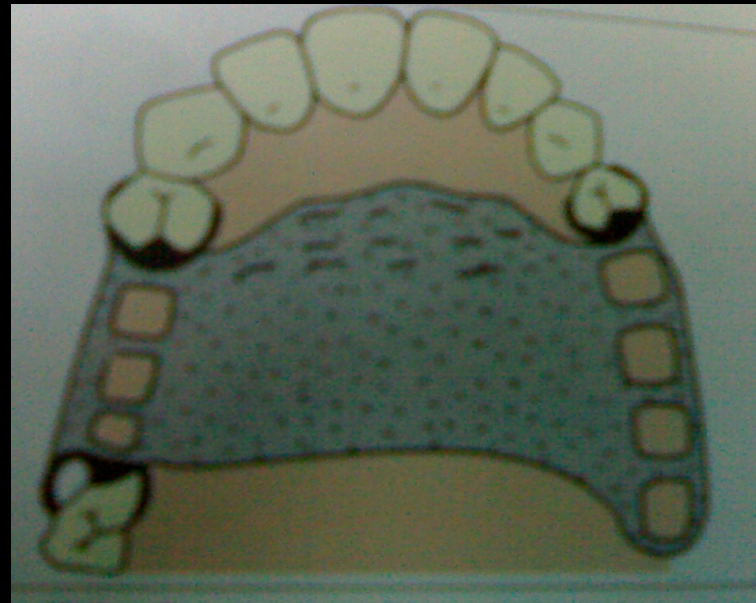
- **DIAMETRIC-** Two direct retainers are diametrically opposite to one another



**UNILATERAL-** Two or more direct retainers present on same side.

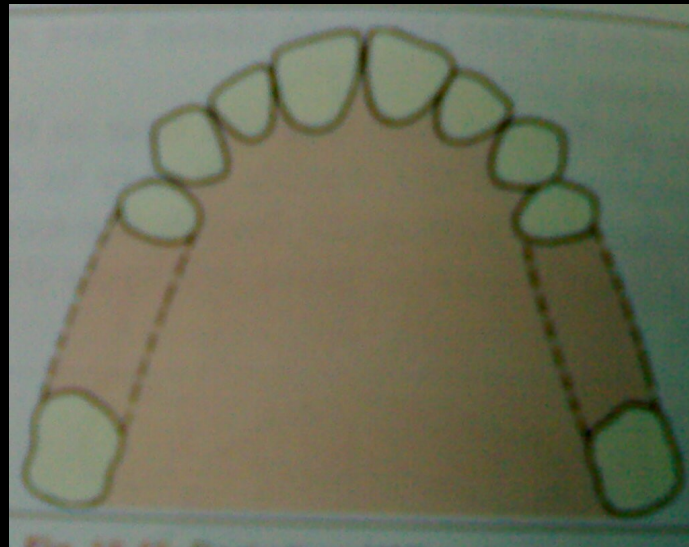


- **MULTILATERAL**-Three direct retainers in a triangular relation

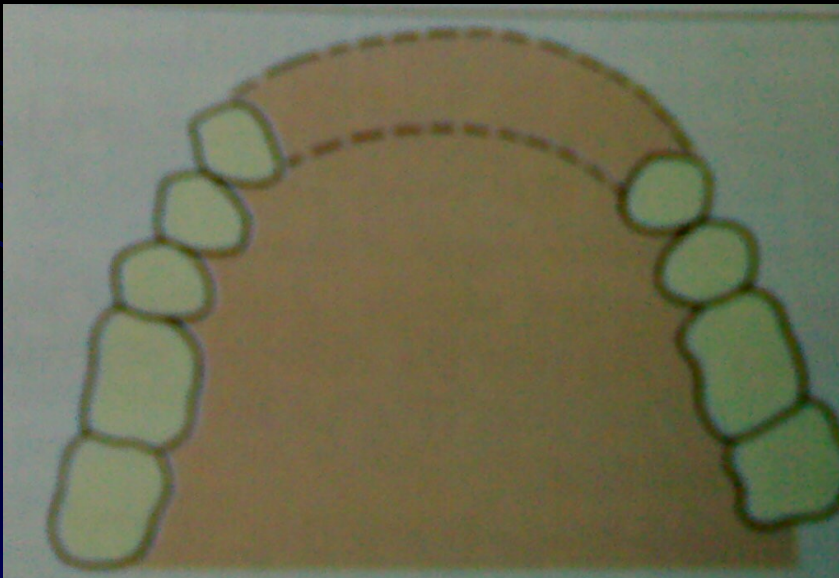


# SKINNER'S CLASSIFICATION-

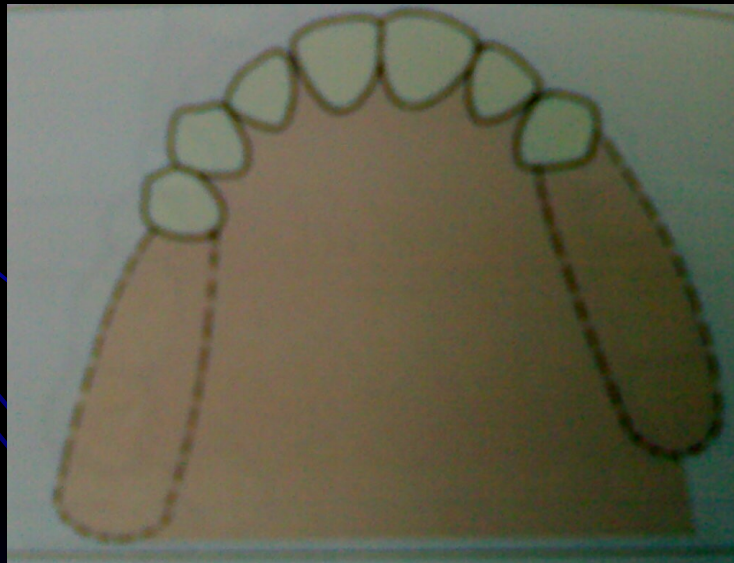
- Based on relation of the edentulous arches to the abutment teeth.
- **CLASS I-** Abutment teeth are present anterior and posterior to the edentulous space.



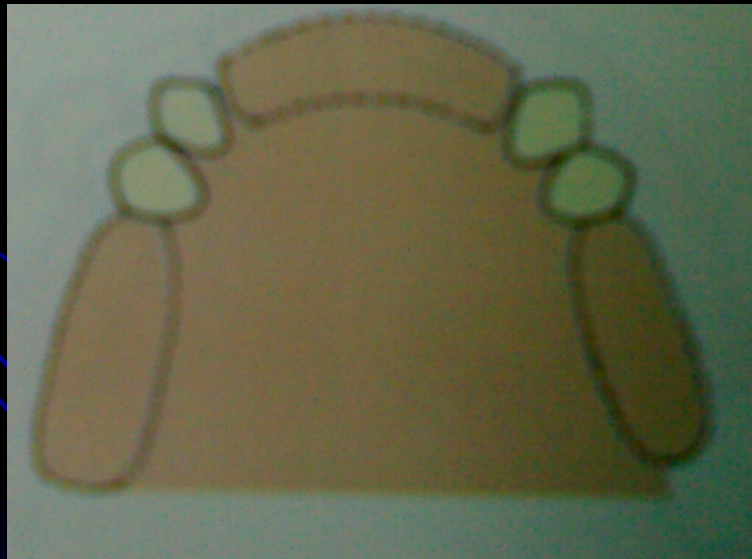
**CLASS II-** All the teeth are present posterior to edentulous space.



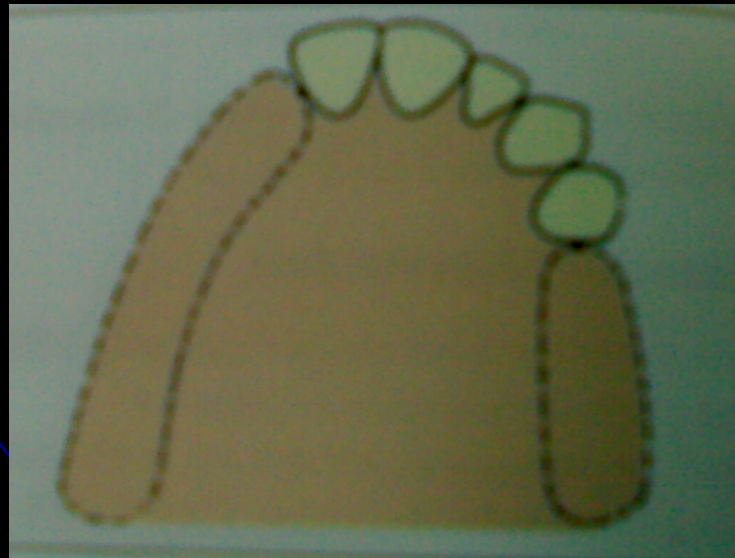
**CLASS III-** All the abutment teeth are anterior to edentulous space which function as partial denture unit.



**CLASS IV-** Denture bases are located anterior and posterior to the remaining teeth and these may be unilateral or bilateral.

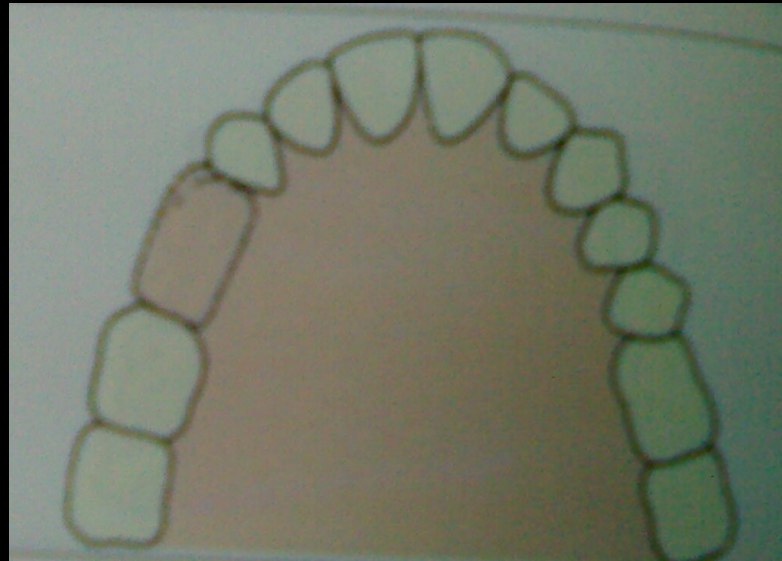


**CLASS V-** Abutment teeth are unilateral in relation to edentulous space and it may be unilateral or bilateral.

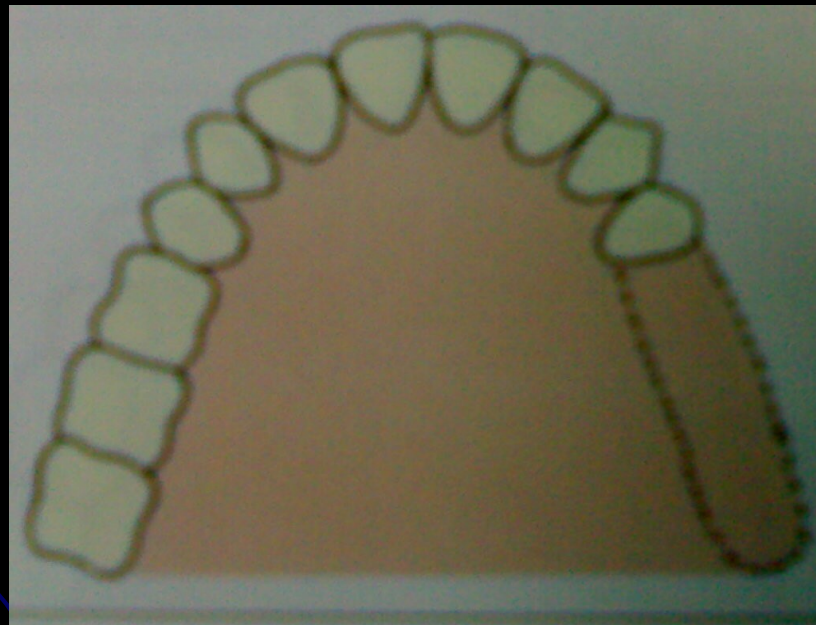


# WATT et al CLASSIFICATION

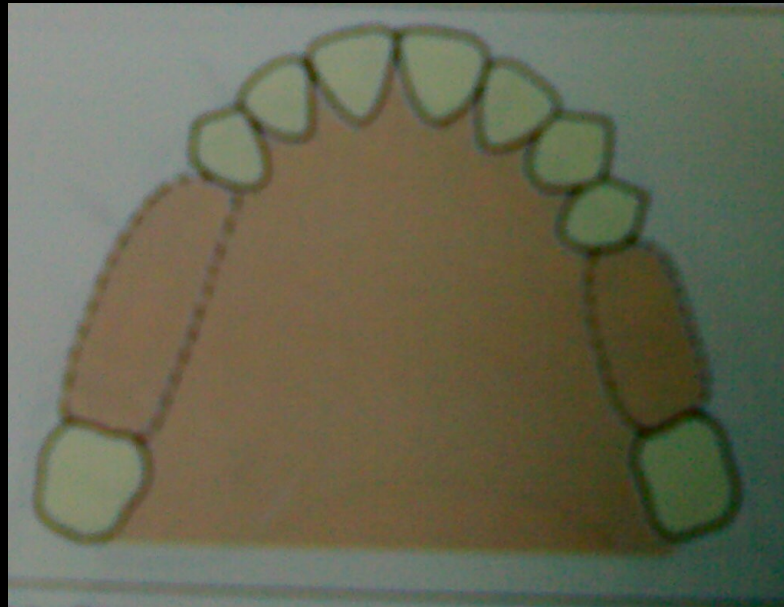
- **CLASS I-** Tooth borne.



- **CLASS II- Tissue borne.**

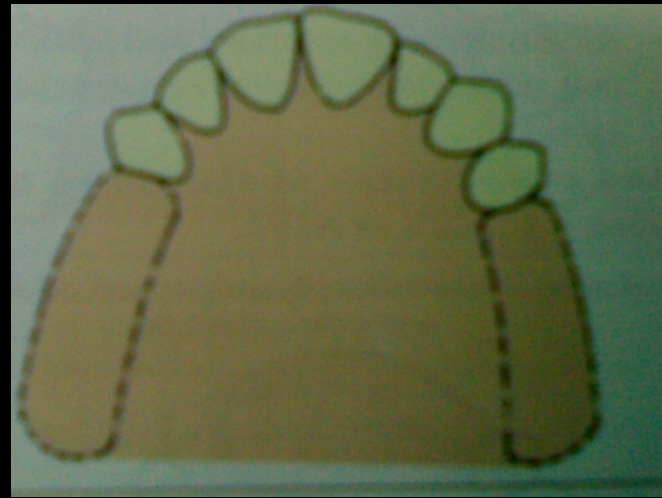


- **CLASS III-** Tooth and tissue borne.

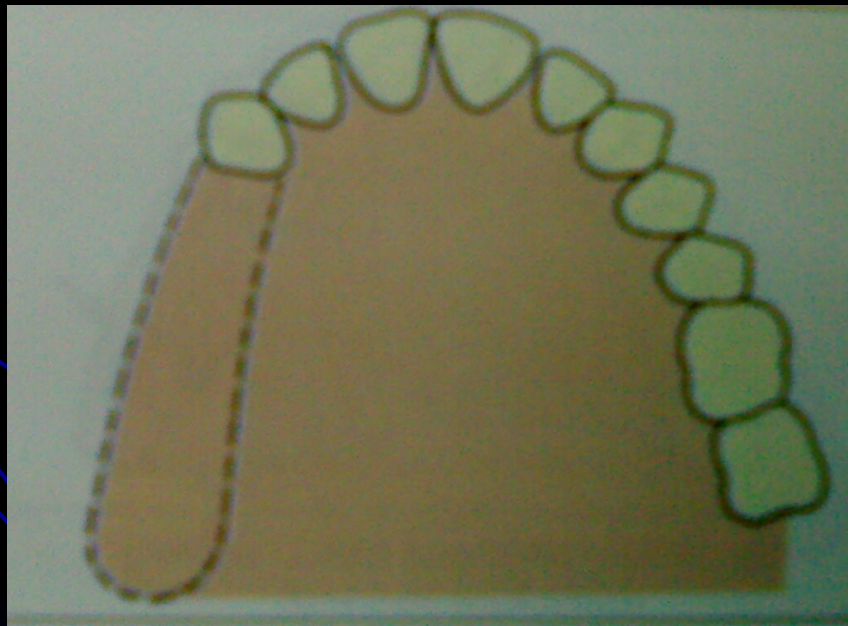


# APPLEGATE KENNEDY'S CLASSIFICATION-

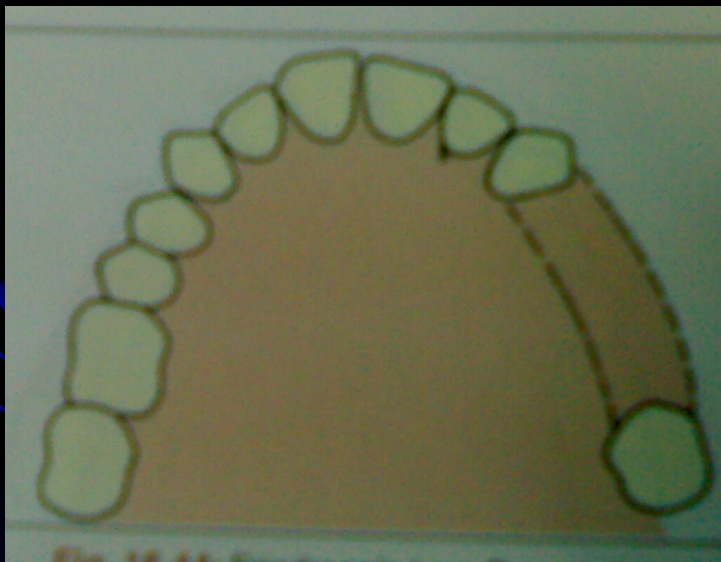
**CLASS I-** Edentulous situation in which all remaining teeth are anterior to bilateral edentulous area.



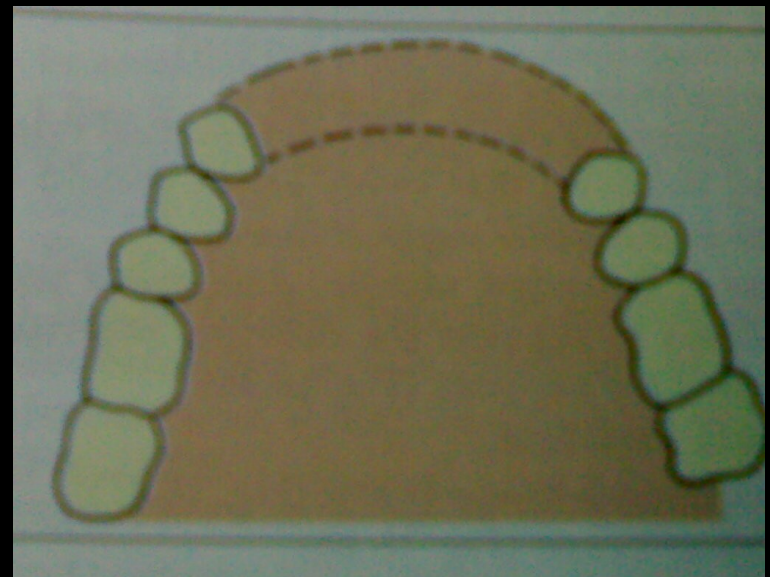
**CLASS II**-Edentulous situation in which the remaining teeth of either right or left side are anterior to unilateral edentulous area.



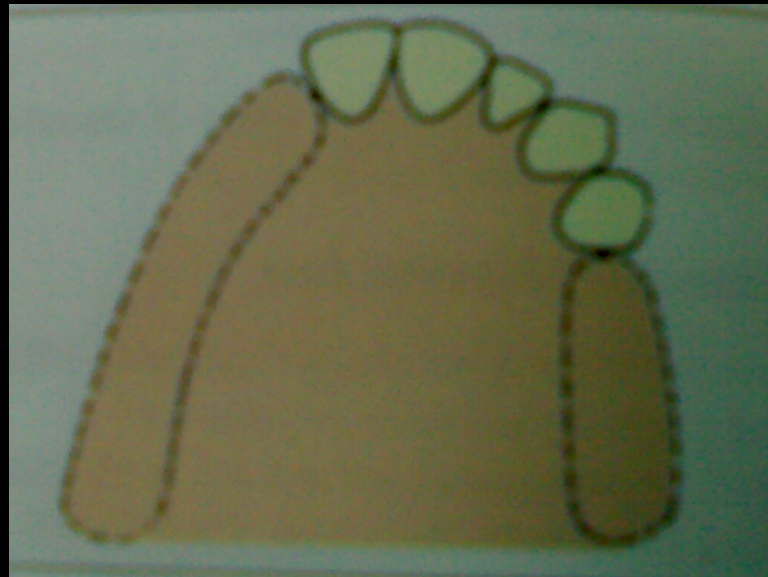
**CLASS III**-Edentulous situation in which the edentulous area is bounded by teeth unable to assure total support of necessary prosthesis.



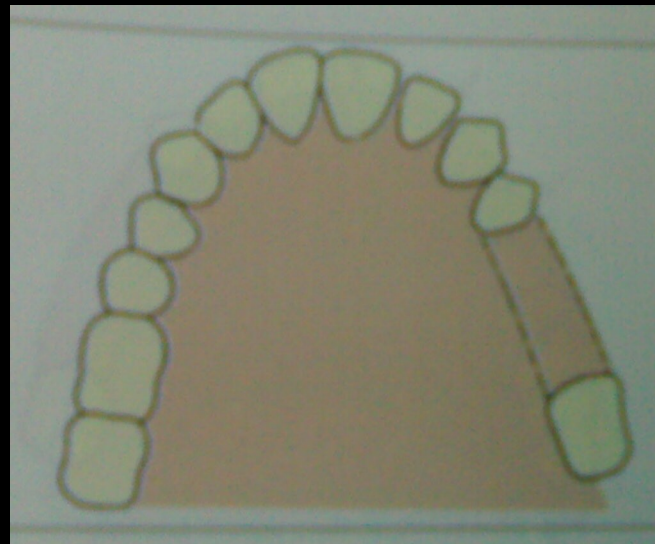
- **CLASS IV**-Edentulous situation in which the remaining teeth bound the edentulous area posteriorly on both right and left side of the median line.



- **CLASS V**-Edentulous situation in which teeth bound the edentulous area anteriorly and posteriorly but where the anterior boundary is not suitable for abutment service.

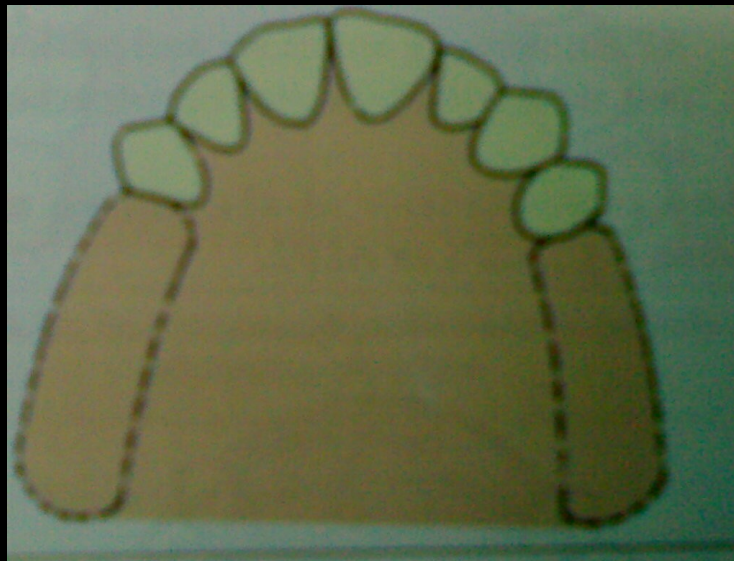


- **CLASS VI-** In which the boundary teeth are capable of total support of the required prosthesis.

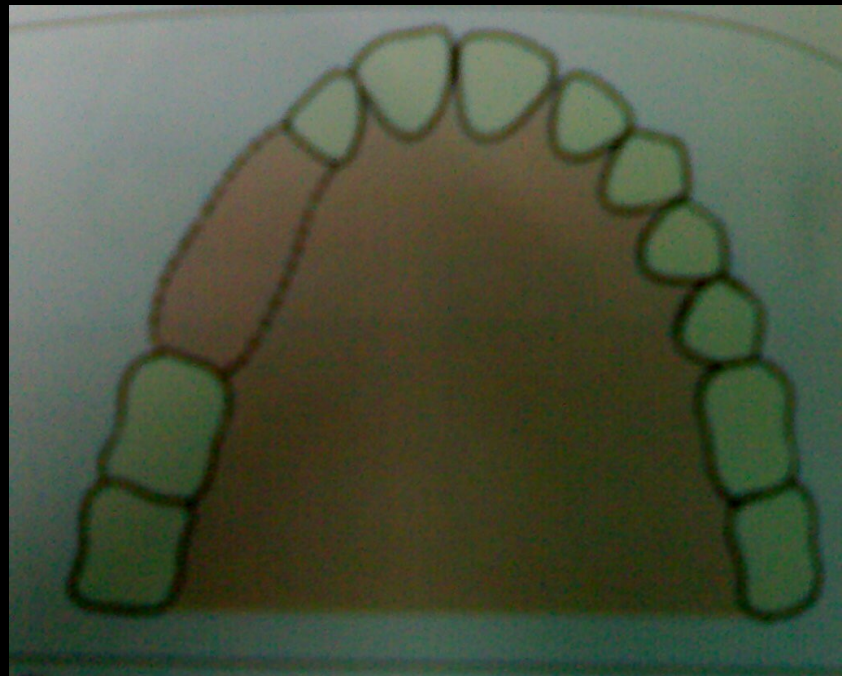


# OSBORNE AND LAMMIE'S CLASSIFICATION

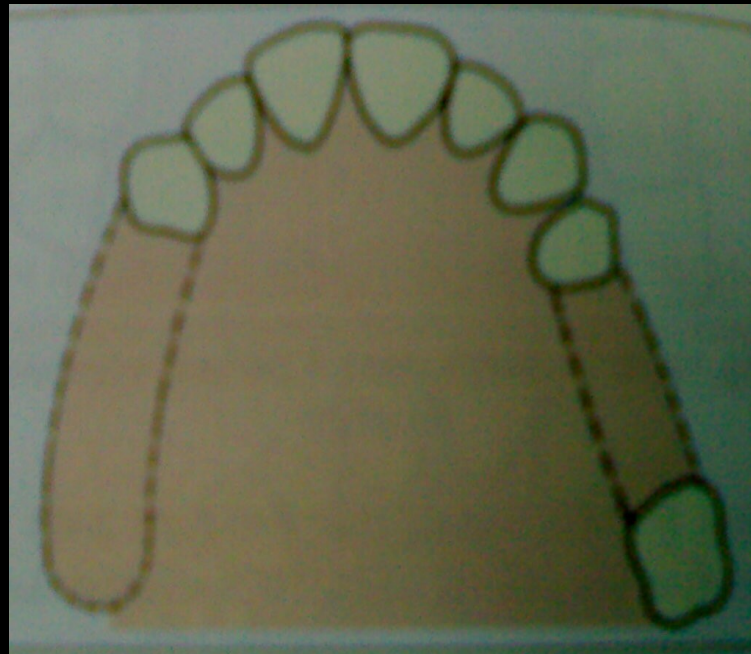
- **CLASS I**-mucosa borne.



- **CLASS II-Tooth borne.**



- **CLASS III**-Combined tooth and tissue borne.



# CHARACTERISTIC OF EACH CLASS-

- **CLASS I-** Found most frequently on the mandibular arch. Frequently posterior teeth are missing for many years.
- The residual ridge will present varying degree of resorption.
- immediate stability will depend on period of its disuse,
- interarch space is reduced.
- remaining teeth have migrated in varying states of malposition.
- 6-10 anterior teeth are remaining .

- **CLASS II-**

- Residual ridge may show more resorptive changes.
- opposing teeth may be extruded or disoccluded.
- due to extrusion it is necessary to do complicated restoration on the teeth opposing edentulous area.
- due to delayed replacement it may even be necessary to sacrifice one or more teeth.
- distal extension base with partial denture of bilateral design

- **CLASS III-**

- Edentulous span is very long.

- abutment root form or length is poor.

- supporting bone shows cervical resorption and or the tooth displays excessive mobility.

- occlusal work load is increased.



- **CLASS IV-**
- When there been much loss of alveolar bone as in case of accidents.

